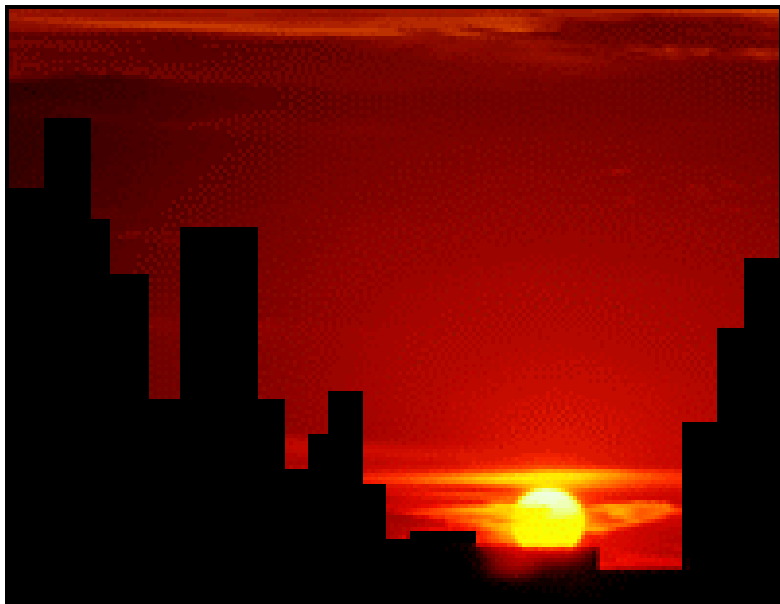


Turning Up the Heat: Climate, Health & Equity



**Dr. Jalonne L. White-Newsome, Senior Program Officer
The Kresge Foundation**

**Local Solutions: Eastern Regional Climate Preparedness Conference
April 4-6, 2016
Baltimore, Maryland**

Healthiest Nation 2030

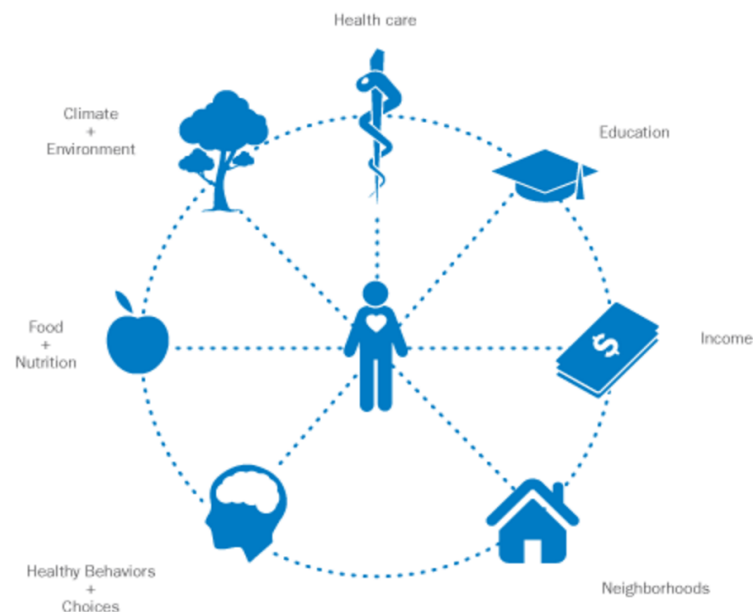
April 4 - 10, 2016



**National
Public Health
Week** www.nphw.org

AN INITIATIVE OF THE AMERICAN PUBLIC HEALTH ASSOCIATION

Social, environmental and individual factors influence our health as well as the opportunity to make healthy choices.



And inequities in these factors have
greater impact on the health of
people of color.

Presentation Outline

- Kresge and its interest in climate change and public health
 - Framing climate resilience through a public health & equity lens
 - Resources
-

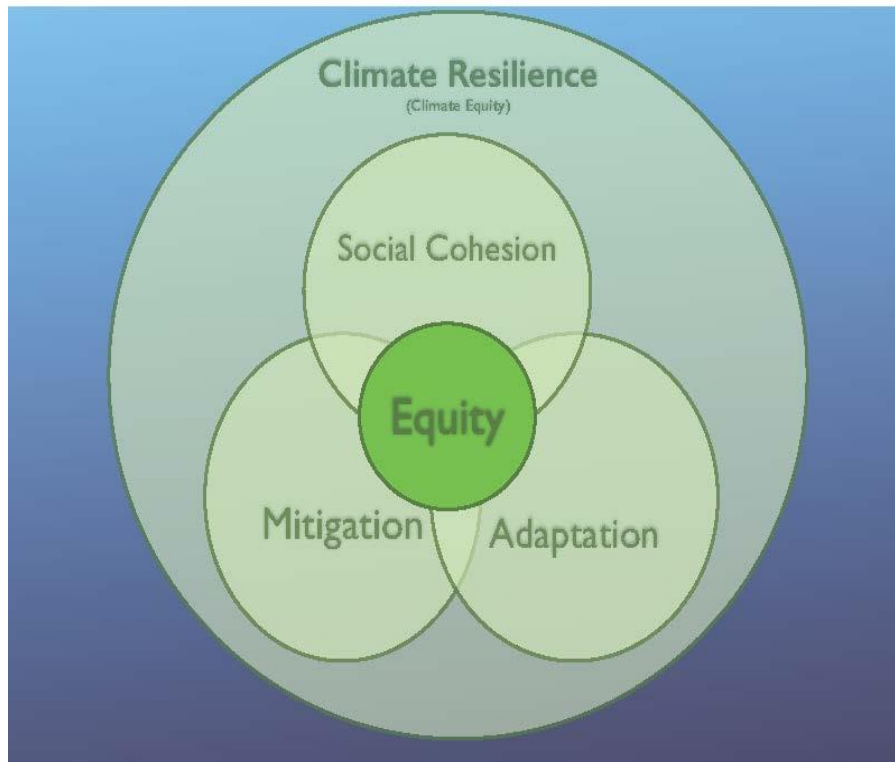
About Kresge

- Expand opportunities for low-income people in American cities
- Programs:
 - Arts & Culture
 - Detroit
 - Education
 - Environment
 - Health
 - Human Services



Environment Program

- We help communities build their resilience in the face of climate change



- Urban Energy Resilience
- Sustainable Water Resources & Management
- Climate Resilience in Coastal Cities
- Climate Resilience and Urban Opportunity

Climate Resilience and Urban Opportunity



Strengthen the capacity of community-based nonprofit organizations to influence local and regional climate-resilience planning, policy development and implementation to better reflect the priorities and needs of low-income people in U.S. cities.

Urban Energy Resilience

Enable cities to achieve dramatic reductions in greenhouse gas emissions in ways that also enhance climate change preparedness, social connectivity, and the engagement and benefit of low-income residents.



Sustainable Water Resources and Management



- Strengthen the physical, economic and social infrastructure in order to address the complexity of **water quality and water quantity** related concerns that are exacerbated by extreme precipitation, drought and an aging water infrastructure system across the U.S. in an equitable manner that will enhance the resilience and health of low-income people.
- New strategy: 3rd quarter 2016

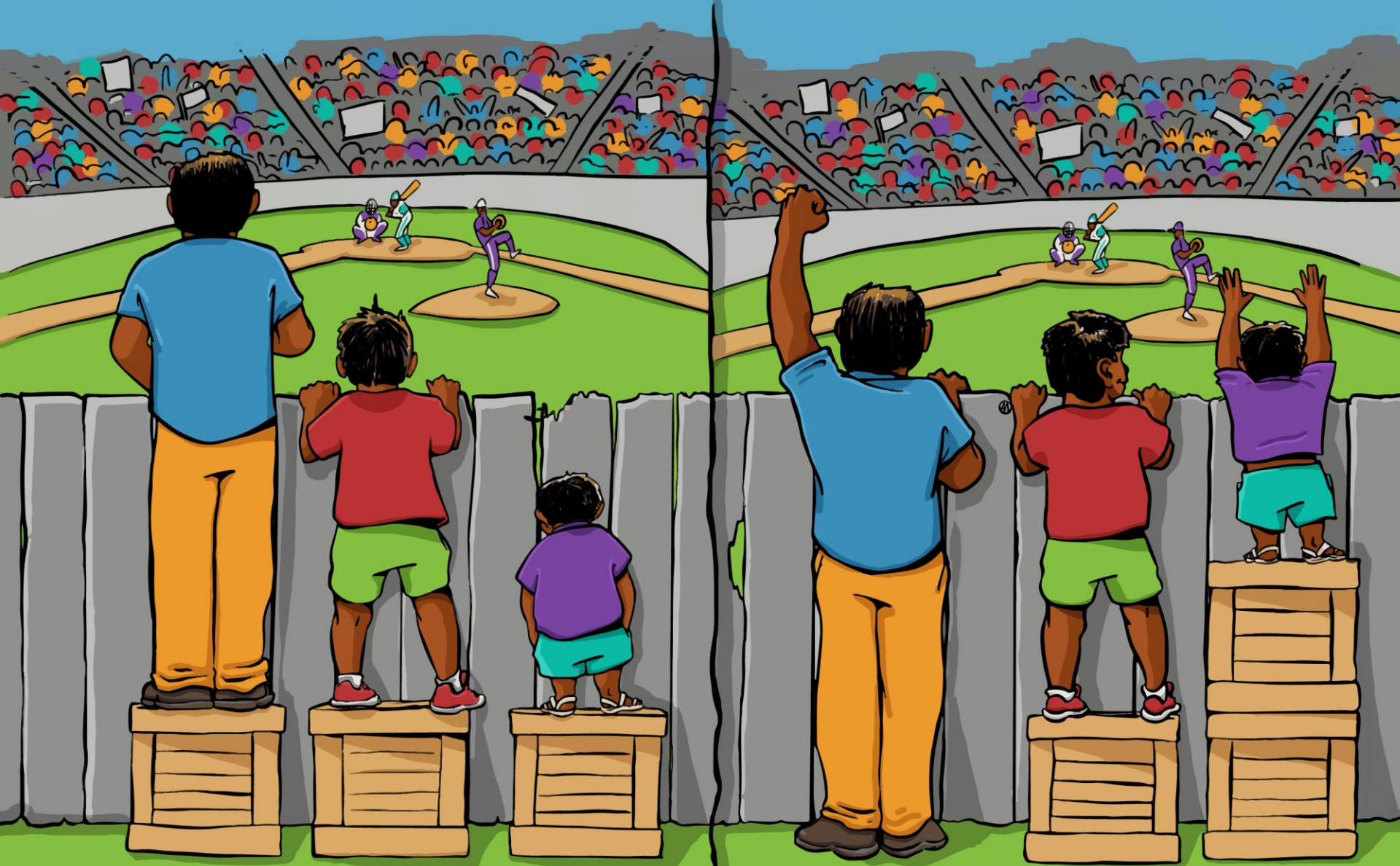
Framing climate resilience through a public health & equity lens

Climate change puts vulnerable people at risk



- The number & severity of **heat waves** is increasing
- Risk of dying is worse for some individuals
 - Children & the elderly
 - people suffering with allergies
 - those with pre-existing health conditions
 - Those living in urban areas
 - Those that are low income, and/or minority

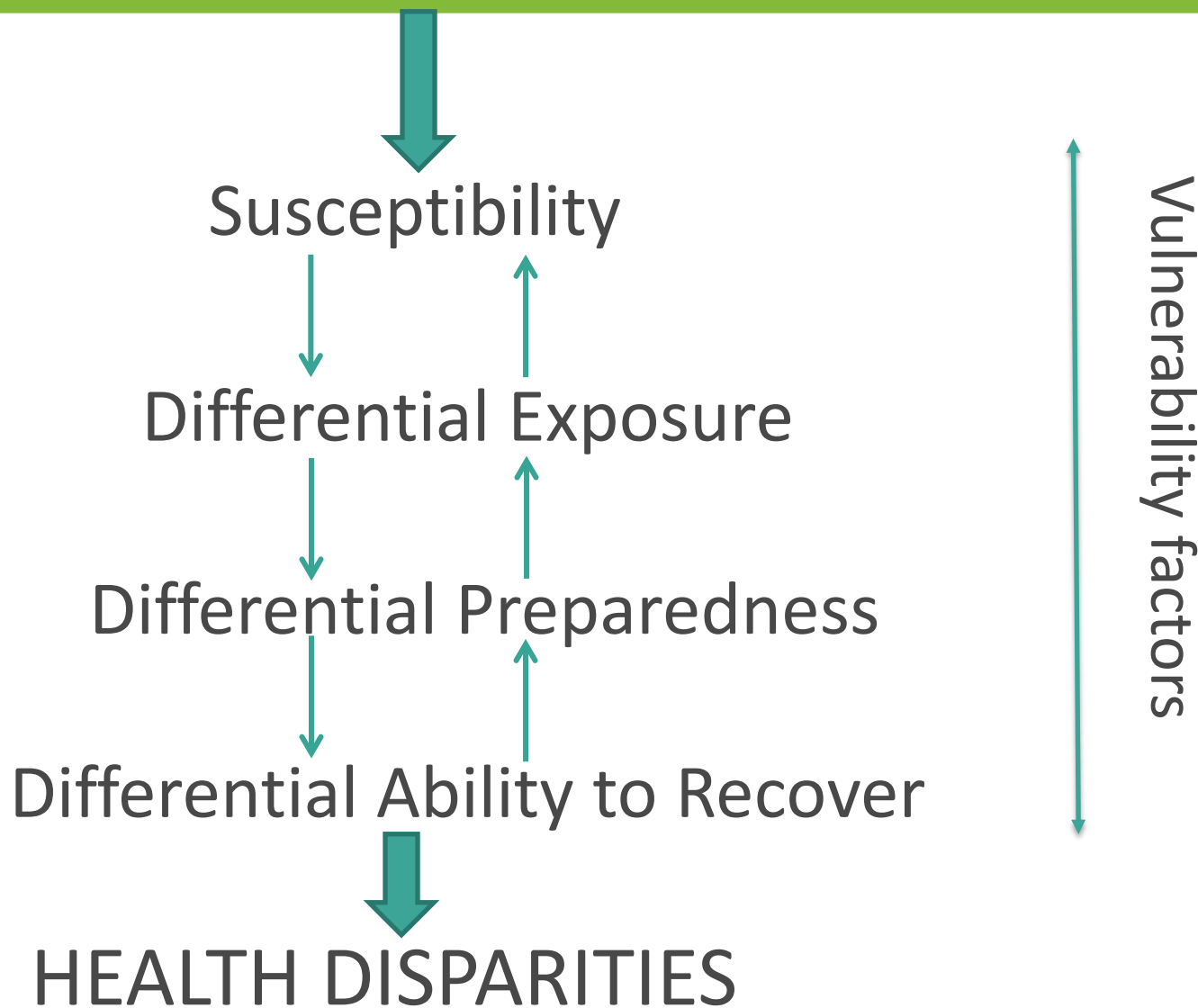
[The Health Impacts of Climate Change on Americans, June 2014](#)



EQUALITY

EQUITY

EXPOSURE TO ENVIRONMENTAL HAZARDS



Key Question:

How do we develop plans to identify and assist the most vulnerable populations to urban heat island impacts?



ENVIRONMENTAL JUSTICE
Volume 2, Number 4, 2009
© Mary Ann Liebert, Inc.
DOI: 10.1089/env.2009.0032

Climate Change, Heat Waves, and Environmental Justice: Advancing Knowledge and Action

Jalonne White-Newsome, Marie S. O'Neill, Carina Gronlund, Tenaya M. Sunbury, Shannon J. Brines, Edith Parker, Daniel G. Brown, Richard B. Rood, and Zorimar Rivera

Validating Satellite-Derived Land Surface Temperature with *in Situ* Measurements: A Public Health Perspective

Jalonne L. White-Newsome, Shannon J. Brines, Daniel G. Brown, J. Timothy Dvonch, Carina J. Gronlund, Kai Zhang, Evan M. Oswald and Marie S. O'Neill

<http://dx.doi.org/10.1289/ehp.1206176>

Online 7 June 2013

International Journal of
**Environmental Research and
Public Health**
ISSN 1660-4601
www.mdpi.com/journal/ijerph

Article

Strategies to Reduce the Harmful Effects of Extreme Heat Events: A Four-City Study

Jalonne L. White-Newsome^{1,†,*}, Sabrina McCormick^{2,†}, Natalie Sampson³, Miatta A. Buxton⁴, Marie S. O'Neill⁴, Carina J. Gronlund⁴, Linda Catalano⁵, Kathryn C. Conlon⁶ and Edith A. Parker⁷



Contents lists available at SciVerse ScienceDirect

Global Environmental Change

journal homepage: www.elsevier.com/locate/gloenvcha



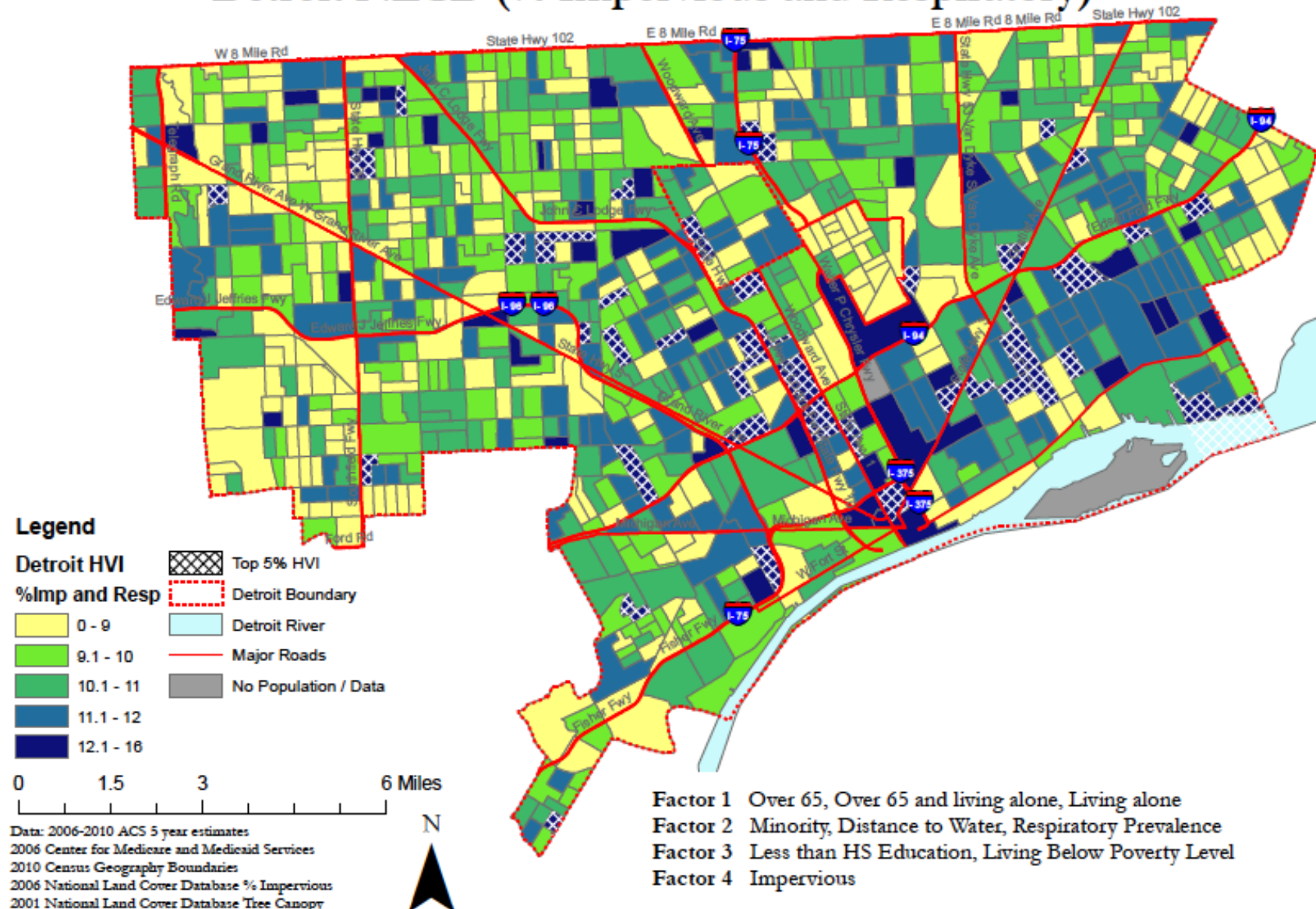
Staying cool in a changing climate: Reaching vulnerable populations during heat events

Natalie R. Sampson^{a,*}, Carina J. Gronlund^b, Miatta A. Buxton^c, Linda Catalano^b, Jalonne L. White-Newsome^d, Kathryn C. Conlon^b, Marie S. O'Neill^{b,c}, Sabrina McCormick^e, Edith A. Parker^f

Created: 29 July 2013

Heat Vulnerability Map

Detroit NLCD (% Impervious and Respiratory)



Making heat a 'hot' issue in Detroit

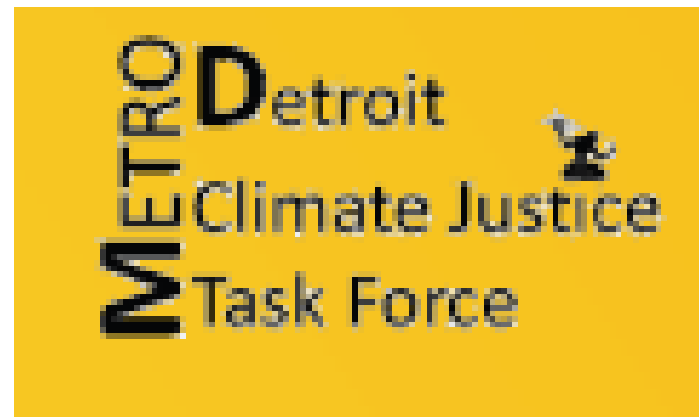
When heat and humidity rise, learn how to

Beat the Heat!

Each year, more people die from heat waves than from earthquakes, floods, hurricanes and tornadoes combined. Anyone can be adversely affected by excessive heat, but older adults are particularly vulnerable.

Here are 8 ways to stay cool!

-  Visit air-conditioned areas such as cooling centers.
 Call 2-1-1 for locations.
 Seniors may call DAAA at 1-855-ASK-DAAA (275-3222).
-  Visit at-risk friends and family; observe them for side effects such as hot, dry skin, and confusion.
-  Ask your physician about any heat related side-effects of medication you are taking.
-  Avoid strenuous activity.
-  Take cool showers or baths.
-  Wear lightweight, light-colored, loose-fitting clothing.
-  Drink lots of fluids (stay away from alcoholic and sugary beverages).
-  Call 9-1-1 if medical attention is needed.



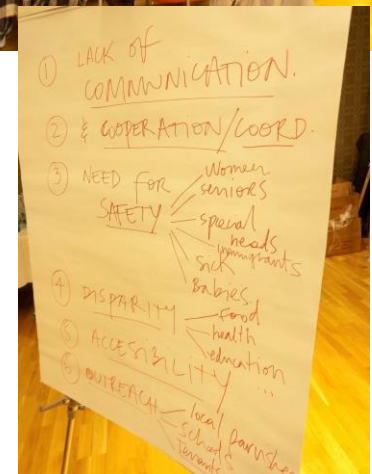
YouTube



Councilman Ken Cockrel Jr. - Public Service announcement on heat awareness

Community based resiliency planning

- Collaborative planning process for ensuring that New York City's response to climate change meets the needs of low-income and other marginalized communities in Northern Manhattan and beyond
- Workshops use scenario planning to identify community needs and opportunities in response to changing temperatures, extreme weather events, and other impacts of climate change
- Identify opportunities to deliver multiple benefits beyond climate-resilience gains, such as green job opportunities, access to natural resources for public health, recreation, etc., support for local food systems, and more
- <http://climateresil-weact.nationbuilder.com/>



5 Considerations as you plan for equitable outcomes

1. Assembling unusual partners
2. Identifying goals and unintentional consequences
3. Measuring what matters to **all**
4. Harnessing a vision in a shared process
5. Continuous evaluation

Resources

Guidance for incorporating equity into planning

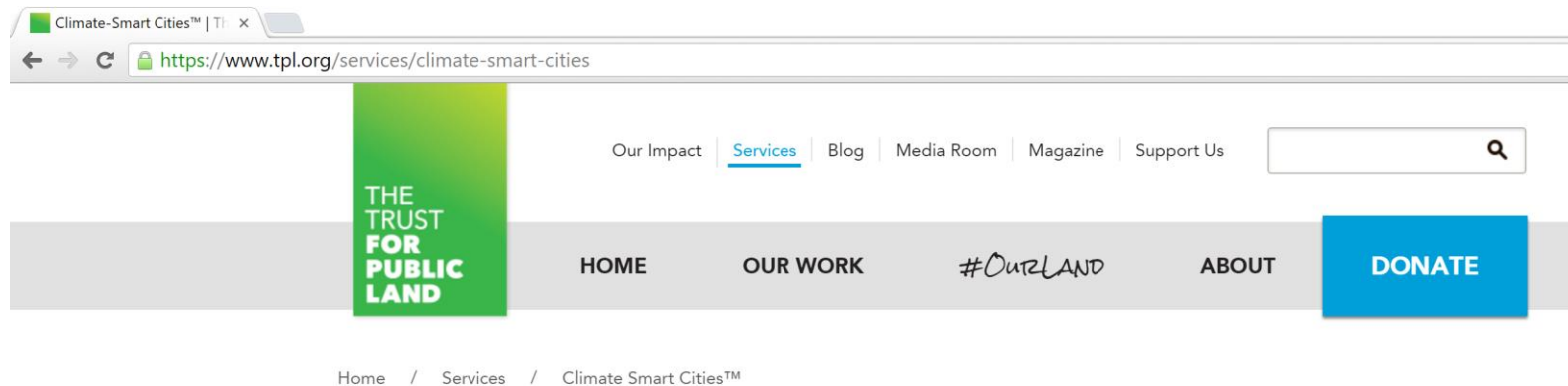
ENVIRONMENTAL JUSTICE STATE GUIDANCE HOW TO INCORPORATE EQUITY & JUSTICE INTO YOUR STATE CLEAN POWER PLANNING APPROACH



JANUARY 2016

- Guidance created for a diverse set of stakeholders with a specific policy focus
- Has transferable lessons and advice for UHI mitigation and adaptation:
 - High impact engagement
 - Conducting an equity analysis
 - Importance of understanding co-benefits
- [Guidance on Considering Environmental Justice During the Development of Regulatory Actions](#)

Trust for the Public Land: Climate-Smart Cities



Climate-Smart Cities™



Related Content

Projects/News/Articles

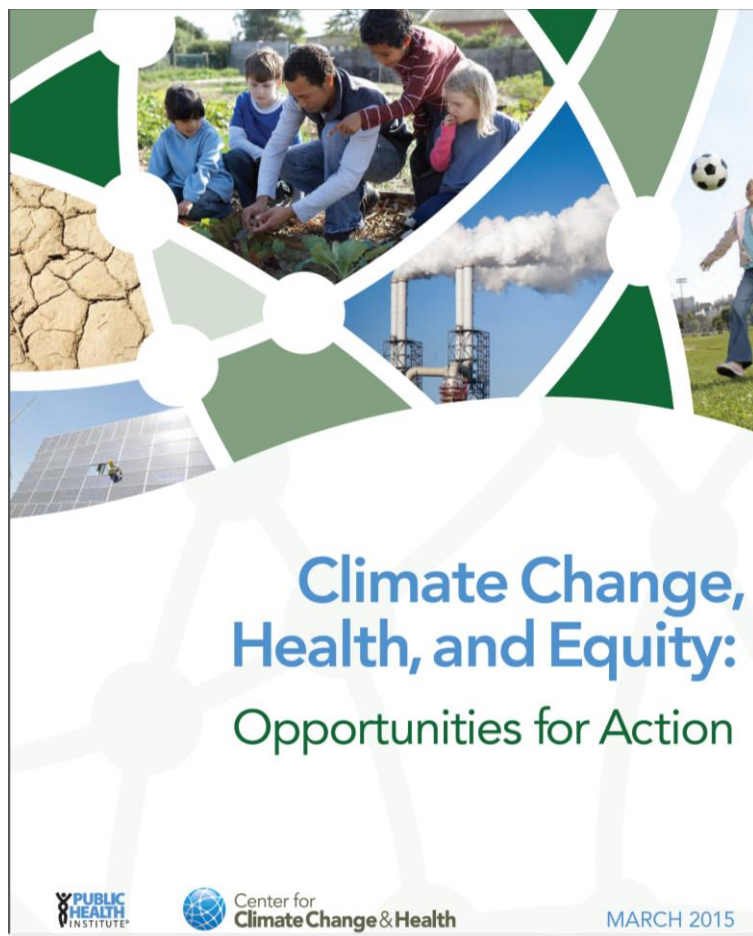
[Climate-Smart Cities™ Cleveland and Sandusky](#)
Project

[Climate-Smart Cities™-Boston](#)
Web Page

[Survive and Thrive: Climate Smart Cities™](#)
Web Page

[Green Infrastructure](#)
Web Page

Resources



ENSURING RISK REDUCTION IN COMMUNITIES WITH MULTIPLE STRESSORS: ENVIRONMENTAL JUSTICE AND CUMULATIVE RISKS/IMPACTS

NATIONAL ENVIRONMENTAL JUSTICE ADVISORY COUNCIL



DECEMBER 2004

**Prepared by the
National Environmental Justice Advisory Council
Cumulative Risks/Impacts Work Group**

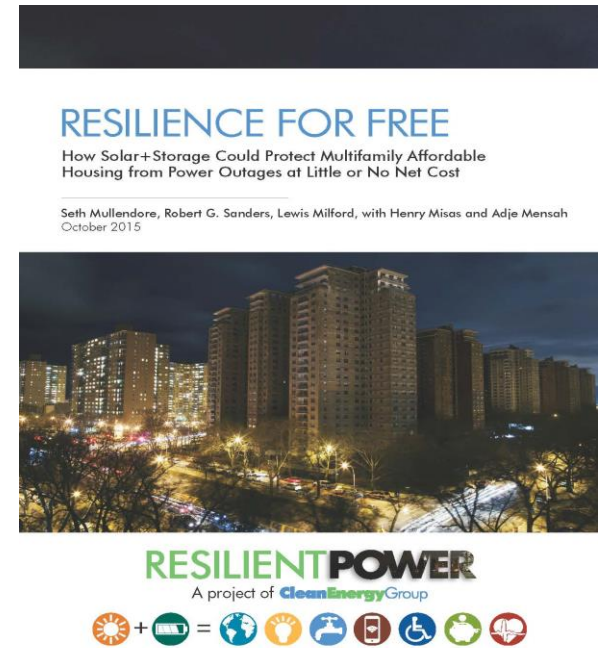
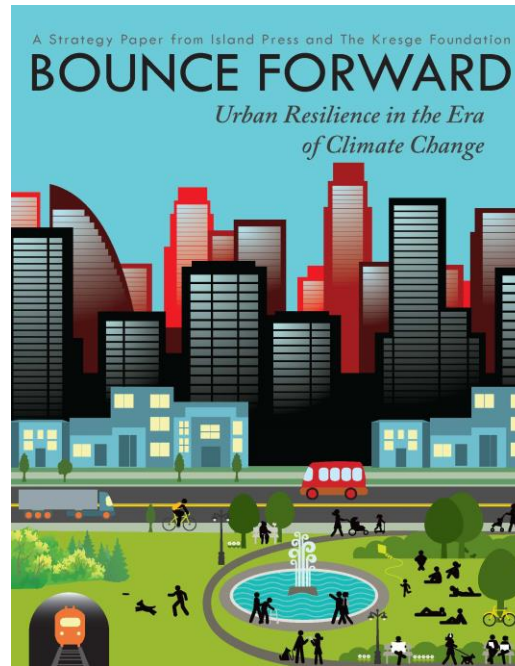
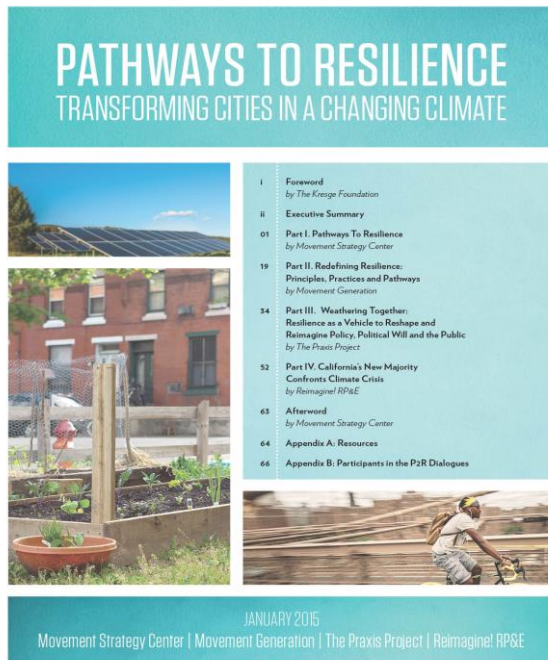
Better Health Through Equity: Case studies in reframing public health work



MARCH 2015

- Build knowledge & understanding
- Start a dialogue about inequality
- Building trust
- Allowing community to shape the interventions
- Not allowing data to be the only driver
- Process

Resources



- [Pathways To Resilience](#)/Movement Strategy Center
- [Bounce Forward: Urban Resilience in the Era of Climate Change](#)/Island Press
- [Resilience for Free:How Solar+Storage Could Protect Multifamily Affordable Housing...](#)/Clean Energy Group

Principles of Environmental Justice

(#7) Environmental Justice demands the right to participate as equal partners at every level of decision-making, including needs assessment, planning, implementation, enforcement and evaluation

Thank you !