

LOCAL CLIMATE CHANGE VISIONING WORKSHOP

III-IV Implementation, Training Resources & Other Applications

Stephen R. J. Sheppard
PhD., ASLA.

Collaborative for Advanced
Landscape Planning,
University of British
Columbia, Vancouver

*Eastern Regional Climate Change
Preparedness Conference, Baltimore
5 April 2016*



Exercise III: Brainstorming how to implement Visioning with scenarios and visualization (15 minutes)

Discussion: what do you need?

- *A team with some capabilities/experience*
- *Backers & budget(?)*
- *Guidelines, advisor or training*
- *Software*
- *Data & local stakeholders/experts*
- *Reviewers*



Questions (self–assessment):

How many of you have the following software in your organisation?

- *Google Maps/Google Earth*
- *GIS*
- *Sketchup*
- *CAD*
- *Photoshop*
- *3D rendering software*

Questions (self–assessment):

How many of you have the following people in your organisation?

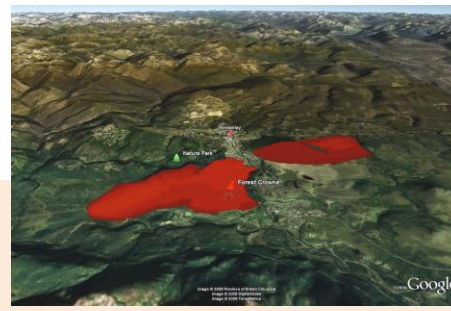
- *GIS staff*
- *Graphics/drafting staff*
- *Designer/landscape architect*
- *Planner*
- *Climate change planner*
- *Energy manager*
- *Communications staff*
- *Student interns*

Justifications to your boss?

- Biggest barriers to effective viz?

A few take-aways:

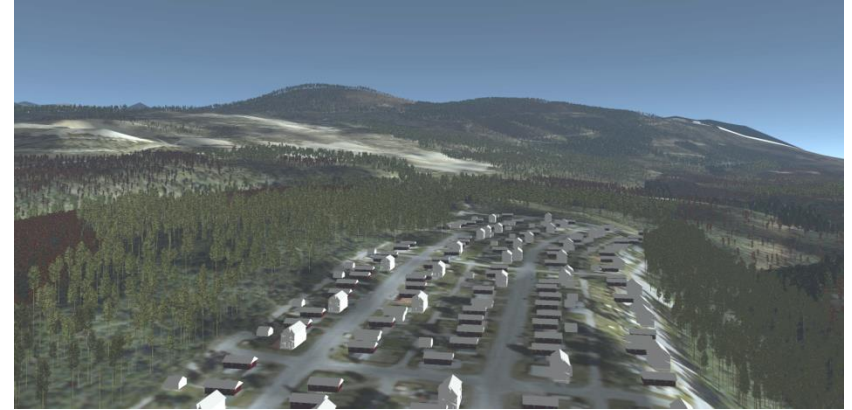
- Credible visualization can speed things up: build knowledge, test alternative solutions, improve decisions
- You don't need fancy software: use GIS, Photoshop, Google Earth...
- Don't reinvent the wheel: guidance, resources and precedent studies are available to adapt
- Have you considered upgrading your planning & outreach with visualisations?



IV Guidance and Resources Available

LOCAL CLIMATE CHANGE VISIONING AND LANDSCAPE VISUALIZATIONS **GUIDANCE MANUAL** (Pond et al., 2010)

Available free online at:
www.calp.forestry.ubc.ca/publications



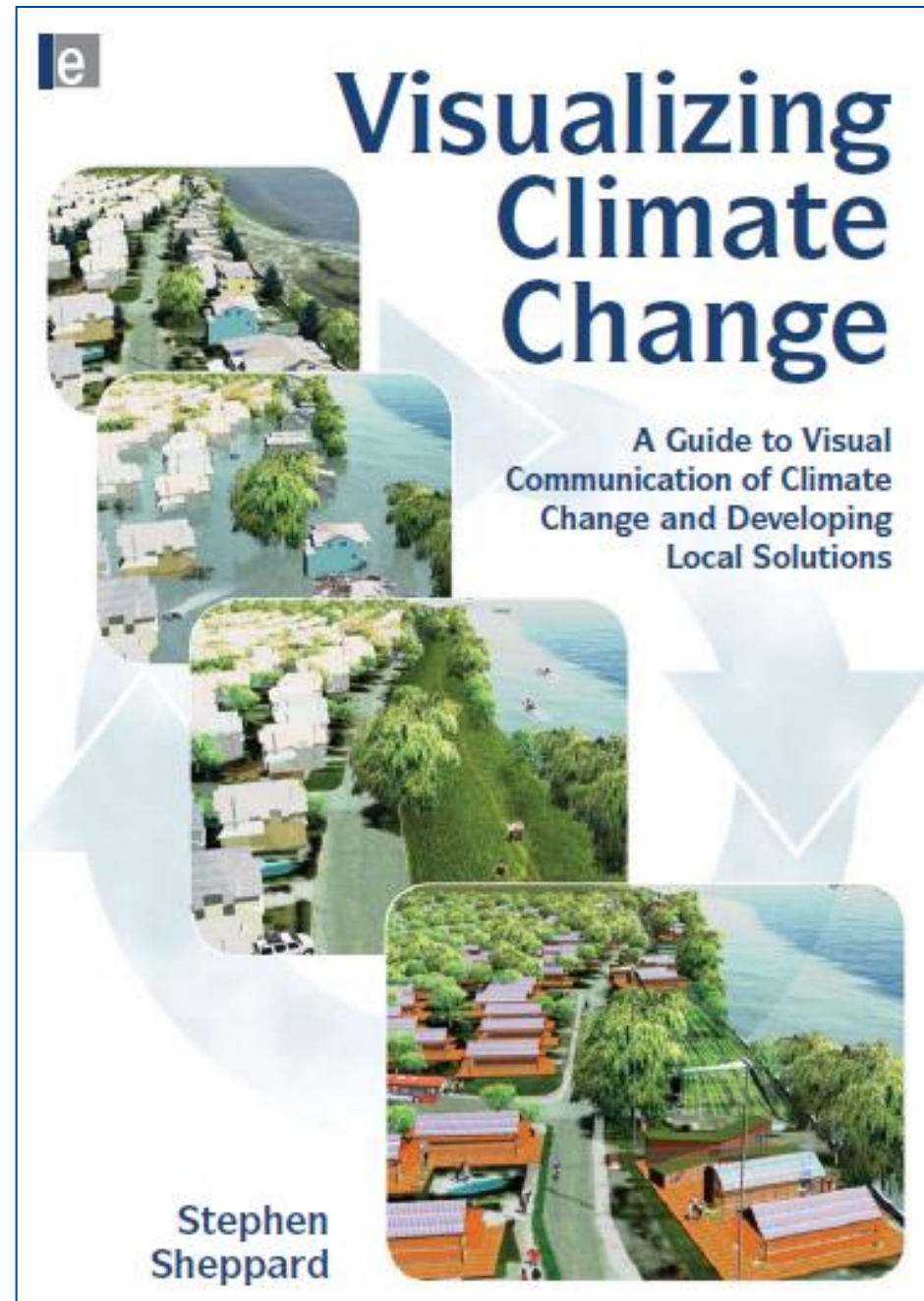
SWISS NATIONAL SCIENCE FOUNDATION

Ministry of
Community and
Rural Development



Recent book from Earthscan/Routledge

- Contains Code of Ethics for visualization
- 100s of tips and examples
- Reviews various visual learning tools/processes
- Available
<http://www.visualizingclimatechange.ca/>



Other Resources:

Delta RAC website:

<http://www.delta-adaptation-bc.ca>

Visualization Training

Modules: <http://www.delta-adaptation-bc.ca/category/training-modules/>

www.calp.forestry.ubc.ca/publications

Collaborative for Advanced Landscape Planning
British Columbia Regional Adaptation Collaborative

Climate Change Planning & Visioning
Training Module 3:
Visualization Design & Production

Training Module 1: Spatial & Local Scenario Building
Training Module 2: Data Integration

Funded by:

  Natural Resources Canada / Ressources naturelles Canada





C A L P

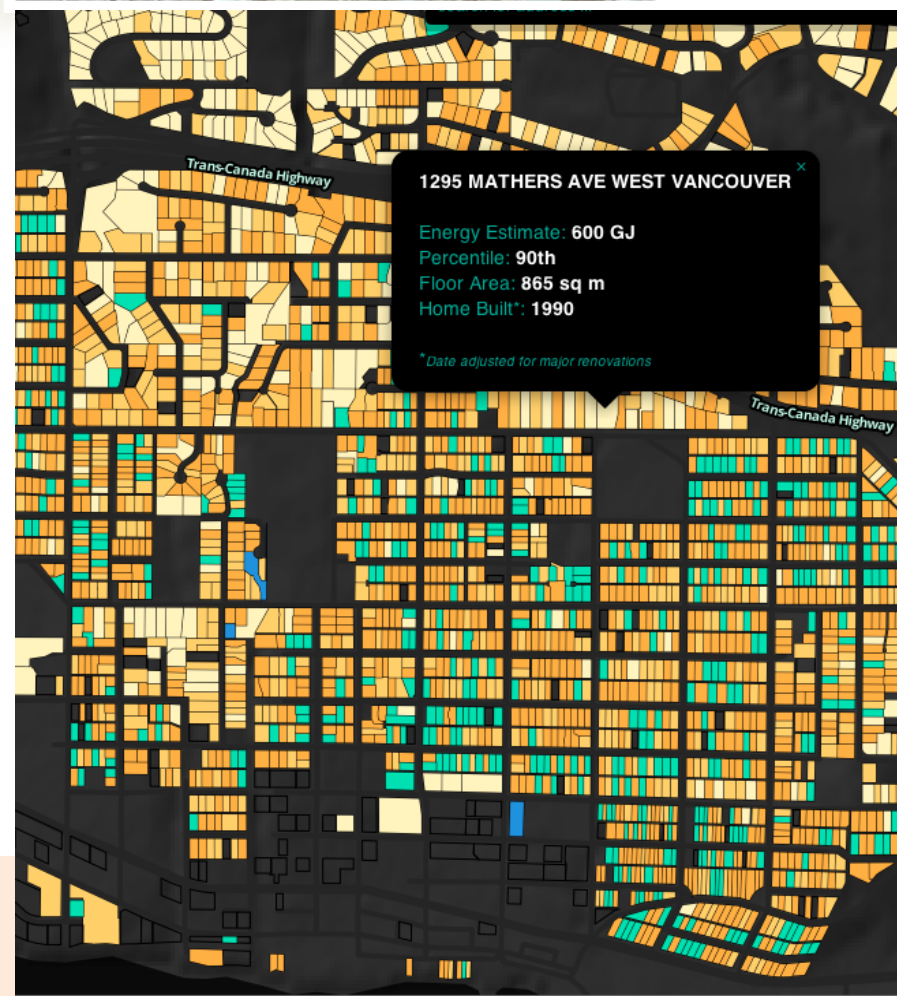
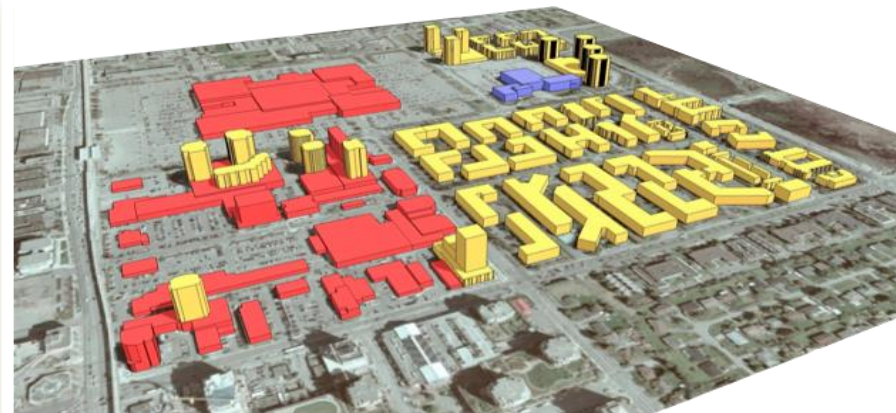




An Illustrated Guide to COMMUNITY ENERGY

Exploring the sustainable energy potential of your neighbourhood

www.guidetocommunityenergy.com

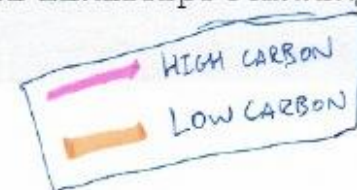


<http://www.energyexplorer.ca>

BSC Kelowna workshop: block-mapping example (carbon)



ctor, Collaborative for Advanced Landscape Planning // UBC



Paul Pereira
Leonard Lin
Nasa Bremer

Southeast False Creek climate change web tour

Google

stephen.sheppard@ubc.ca

Get directions

My places

Save to My Places

Sustainability Photo Tour - SE False Creek
Public · 95 views
Created on Apr 5 · By · Updated Apr 11
[Rate this map](#) · [Write a comment](#) · [KML](#)

Counting Bikes

"Below this bike path are wire loops that act like metal detectors. When a metal bike passes over the loop, the metal in the bike creates a small electric current and adds another bike to our counters..."

Recycled Music

The instruments here are made from reclaimed waste destined for the landfill. By reusing or repurposing materials like the piping and propane tanks instead of recycling or taking them to a landfill th...

Tubular Energy

Evacuated tube solar thermal system on the facade of Science World. "When light from the sun hits the panel of tubes on the south side of our building, its heat energy is collected by metal fins insi...

Ontario Bikeway Raingarden

Raingardens are planted depressions designed to collect water and let it slowly clean and percolate back into the ground. By doing this not they only cut down on the need for unsustainable piping syst...

Green Streets

By incorporating green infrastructure elements such as permeable paving and rain gardens the green streets of Olympic Village help reduce run off and reliance on expensive, unsustainable engineering st...

Giant Birds

These giant birds by artist Myfanwy MacLeod are a massive representation of the small House Sparrow introduced to North America from England in the 1800's. Since then this small invasive sparrow has ...

Solar Compacting Garbage & Recycling Stations

By using solar power to run compactors these garbage and recycling bins are able to reduce the number of visits from garbage collectors by up to eighty percent, cutting down on greenhouse ga...

A satellite map of the Southeast False Creek area in Vancouver. A green line traces a route through the area, starting from the bottom left near Commodore Rd and ending near the top right near Green Park. Blue location pins are placed along this route at various points of interest. The map shows streets such as Cambie St, Pacific Blvd, Coopers Way, Seaside Bicycle Route, Granville Island BC - Science World / Plaza, Park Site at Southeast False Creek, Athletes Way, Olympic Village Square, Ferry Ramp, Quebec St, W 1st Ave, W 2nd Ave, W 3rd Ave, W 4th Ave, W 5th Ave, Wyle St, Crow St, Albera St, Columbia St, Manitoba St, Ontario St, BC Parkway, and Ash St. Other landmarks include Coopers Park and Granville Island BC - Science World / Plaza.

<https://maps.google.ca/maps/ms?msid=213493879154602303507.0004d9a3c1d2e5f3138b0&msa=0>

New Directions

(Wednesday demo at 10am)

Future Delta 2.0 educational climate change videogame



Implications for visualizing our futures with climate change

- **Vivid, personally meaningful visual imagery:**
 - grabs attention, resonates, can accelerate learning & action
 - can be a grassroots DIY tool
- **Moral imperative to use visuals more systematically:**
 - training and capacity-building for increased application in practice
- **Professional imperative to do it right:**
 - adopt ethical principles
 - embed in structured, participatory decision-making processes



Acknowledgements:

Jon Salter

Ellen Pond

David Flanders

Kristi Tatebe

Sara Barron

Dr. Olaf Schroth

Dr. Alison Shaw

Dr. Sarah Burch

Dr. Stewart Cohen

Dr. Jeff Carmichael

Dr. John Robinson

- GEOIDE Research Network
- Environment Canada
- Natural Resources Canada
- Climate Action Secretariat
- PICS
- BC MOE & PCIC
- BC MCRD
- Fraser Basin Council
- Metro Vancouver
- Corporation of Delta
- District of North Vancouver
- District of West Vancouver
- City of Kimberley
- Real Estate Foundation
- Neptis Foundation
- Vancouver Foundation
- China Green Carbon Foundation

THANK YOU!



www.calp.forestry.ubc.ca