

An aerial photograph of Atlanta, Georgia, showing a dense forest of green trees in the foreground and a city skyline with various skyscrapers in the background under a blue sky with scattered white clouds. A large white circle is superimposed on the left side of the image, framing the word 'RESILIENT'.

RESILIENT

ATLANTA

Cicely Garrett
Deputy Chief Resilience Officer



PIONEERED BY THE
ROCKEFELLER FOUNDATION

100

RESILIENT

CITIES

Helping cities around the world become more resilient to the **physical, social** and **economic challenges** that are a growing part of the 21st century.

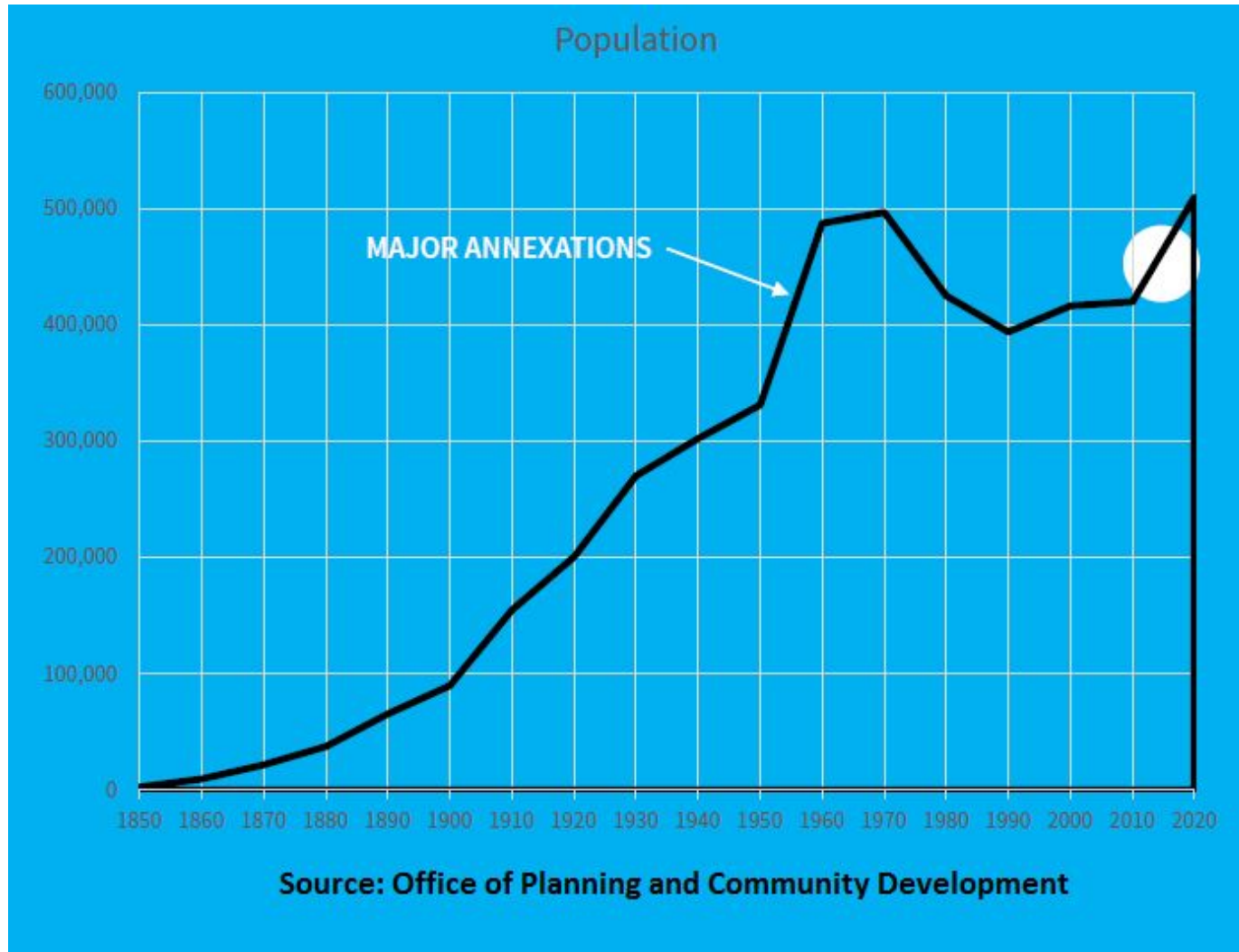


CITY IMPACT

1.4 million new people are moving into cities **every week.**

People are drawn to cities as centers of economic activity, social connection, opportunity, and innovation.

A GROWING CITY



Metro Atlanta will add
2.5 MILLION PEOPLE
in the NEXT
25 YEARS
= **273 per day**

100RC MEMBER CITIES



100RC SUPPORT

1.

Funding to Hire a
**Chief Resilience
Officer (CRO)**

2.

Support to Develop
a City **Resilience
Strategy**

3.

A **Platform of
Services** to
Support Strategy
Implementation

4.

Membership in the
100RC **Network**

**TO HELP COMPLEX URBAN
SYSTEMS ORGANIZE AND
INTEGRATE AROUND RESILIENCE**

**TO SCALE SOLUTIONS
EFFICIENTLY**

CITY'S ALTERNATIVE FUEL VEHICLES



Mayor pledges to the Energy Secure Cities Coalition to transition Atlanta's fleets off oil by 2025.

- April 2015 the Office of Sustainability contracts with Vision Fleet to pilot Alternative Fuel Vehicles in the City fleet.
- Summer 2016, Alternative Fuel Vehicle Fellow hired.

RIDE & DRIVE



In February 2017, for every dollar spent on maintenance for gasoline vehicles, Atlanta spent \$.06 on maintenance for electric vehicles.

- The 67 PEVs in the City's fleet account for .03% of the total maintenance costs.
- 1,061 gallons of gasoline were mitigated.
- \$1,789.59 was saved in fuel costs.
- 20.8 tons of CO2 mitigated

MAKING ATLANTA RESILIENT



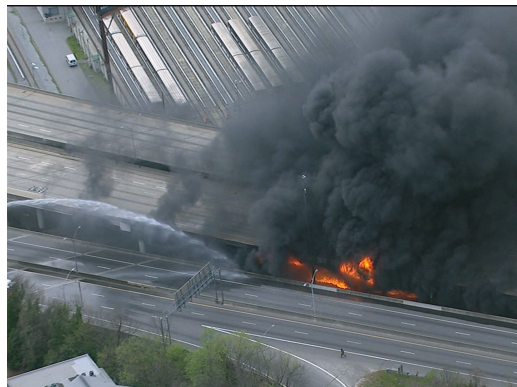
URBAN RESILIENCE

The capacity of individuals, communities, institutions, businesses, and systems within a city to **survive, adapt, and grow** no matter what kinds of chronic **stresses** and acute **shocks** they experience.



ACUTE SHOCKS & CHRONIC STRESSES

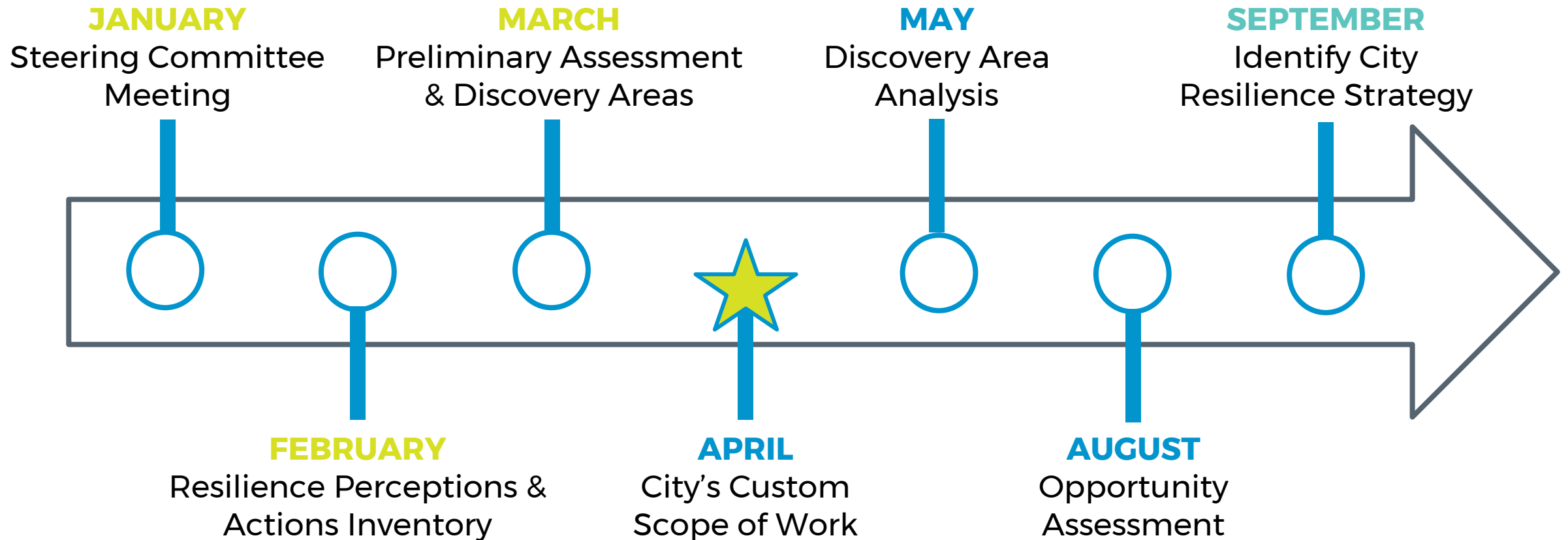
SHOCKS



STRESSES



ATLANTA RESILIENCE TIMELINE



PIONEERED BY THE
ROCKEFELLER FOUNDATION

100

RESILIENT

CITIES

CONTACT US

www.ResilientAtlanta.org

Comments@ResilientAtlanta.org

Follow us @ATLResilience



Cicely Garrett
Deputy Chief Resilience Officer
CIGarrett@AtlantaGa.Gov