

Risky Business

How to assess our risk

An Interactive Session on Community
Decision Framework Models for Climate
Adaptation

Local Solutions: Northeast Climate Change
Preparedness Conference
Manchester New Hampshire

May 19, 2014

Agenda

- **Welcome & Introductions:** Edward Saltzberg, Managing Director of the Security and Sustainability Forum
www.ssfonline.org
- **Community Decision Model Presentations**
 - ***The Climate Café – Simple Steps to Stating with Adaptation:*** Chris Keeley, Communities & Climate Program Coordinator, University of New Hampshire
 - ***Testing the shift from perceived to anticipated risk using the COAST Approach™*** : Sam Merrill, President of Catalysis Adaptation Partners
- **Audience Discussion:** Sherry Godlewski, Environmental Program Manager at NH Department of Environmental Services

The Climate Café:

Simple Steps to Starting with Adaptation

Chris Keeley

Communities & Climate Program



I want to hear from you





A close-up, slightly angled view of a red carpet. The carpet is marked with thick white lines that form a grid pattern. The word "START" is printed in large, white, bold, sans-serif capital letters on one of the red squares. The carpet has a visible texture, and the lighting creates a slight shadow on the right side of the letters.

START

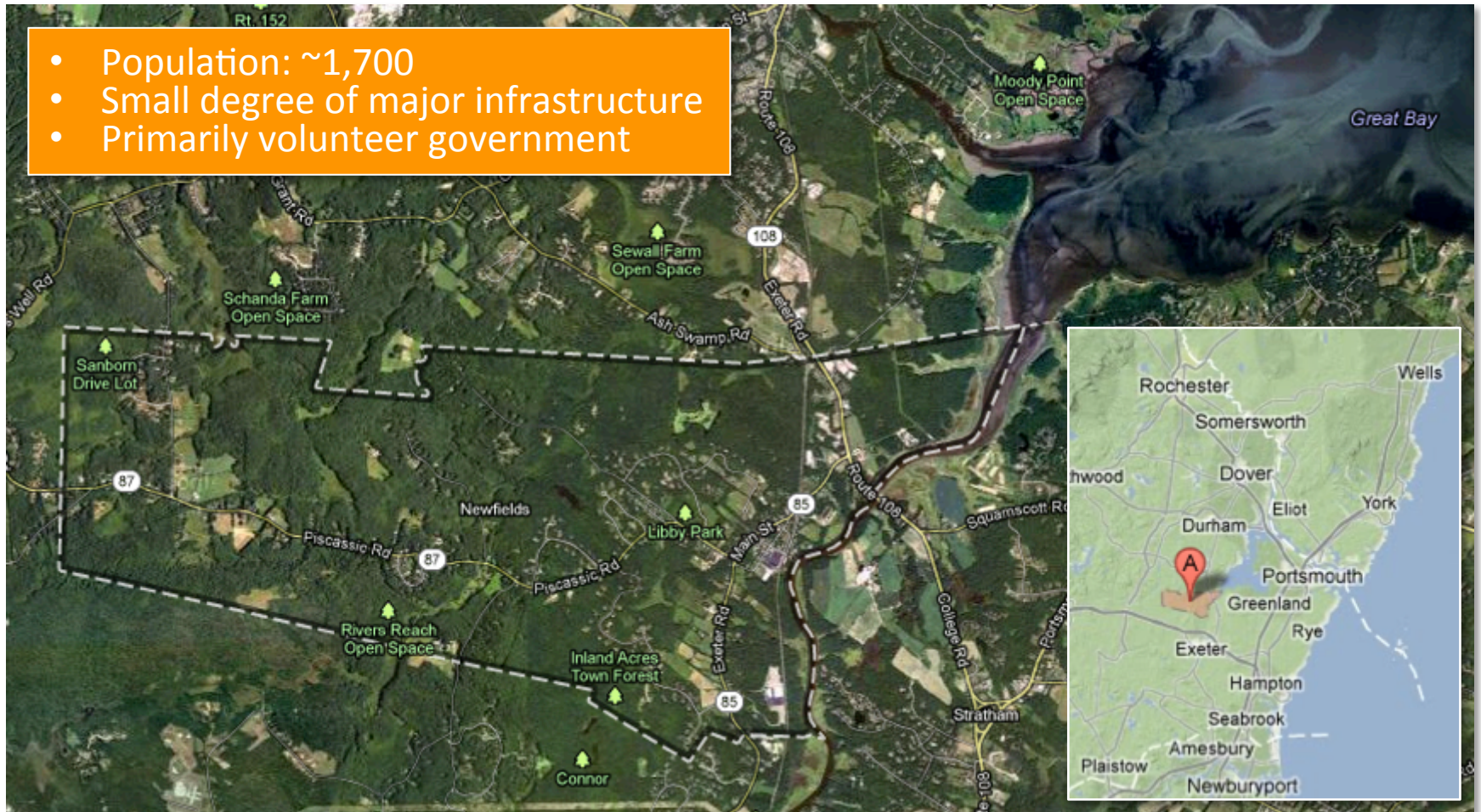
A photograph of a man with dark hair, wearing a white polo shirt with a dark blue collar, looking thoughtful with his hand on his head. A blue thought bubble is positioned above his head, containing the text 'Climate impacts ?'. Three small blue circles lead from the bubble to the man's forehead.

Climate
impacts
?

The Climate Café

Introducing Newfields, NH

- Population: ~1,700
- Small degree of major infrastructure
- Primarily volunteer government



Project Timeline

January-May 2012
Getting started

Talking with Planning Board, Emergency Management to build relationships, and ID local concerns & key participants.



Project Timeline

January-May 2012

Getting started

Talking with Planning Board, Emergency Management to build relationships and ID local concerns & key participants.

June

ID'ing values

Kick-off meeting with community dinner, local climate assessment, and World Café approach to vulnerability assessment.



Part I: Learning about the impacts



Local climate assessment
presented by UNH climate
change expert/co-author.

30 minute Presentation
20 minute Q&A

Part II: Talking about “vulnerabilities”

How could _____ (people, infrastructure, or natural resources) be impacted by *more flooding, extreme heat, and more frequent or intense storms?*



What actions can be taken to address these impacts?

Result: Focus Areas for Adaptation

Two focus areas emerged: Stormwater Management & Emergency Preparedness



Project Timeline

January-May 2012

Getting started

Talking with Planning Board, Emergency Management to build relationships and ID local concerns & key participants.

June

ID'ing values

Kick-off meeting with community dinner, local climate assessment, and World Café approach to vulnerability assessment.

July-August

Moving to Action

Developing strategies and identifying actors, resources, and timeframes.

September-November

Review progress, ID key near-term actions.

December 2012 -

January 2013

Implementation.

Action Planning

SAMPLE

Focus Area #1: Stormwater Management

Actions	People	Costs	Timeframe	Notes
<i>Outcome #1: A web-based map of stormwater infrastructure that is easy to access and update.</i>				
1. Inventory the <i>location, capacity, and condition</i> of stormwater infrastructure. <ul style="list-style-type: none"> • Contact UNH Civil Engineering Department about student volunteer project • Look into NH Coastal Program funding, New England Grassroots Environment Fund, and others 	Planning board PB Chair Coastal Adaptation Workgroup	None to low	Spring 2013	There are several options for obtaining this information: (a) Incorporate as a CIP action, (b) pursue through volunteer collection, (c) Hire a contractor
...

How has the Climate Café been used in other communities?

PREPARING FOR CLIMATE CHANGE IN RYE

GAINING INSIGHTS AND CHARTING A COURSE

The Climate Café – A Starting Point

Workshop #1 – The Climate Café

Climate Change 101 and small group discussions



Workshop #2 – What Tools Are Available?

An overview of planning and regulatory tools to use for adaptation (e.g., master plan, zoning, subdivision and site plan)



Workshop #3 – A Field Trip to Rye's Salt Marshes!

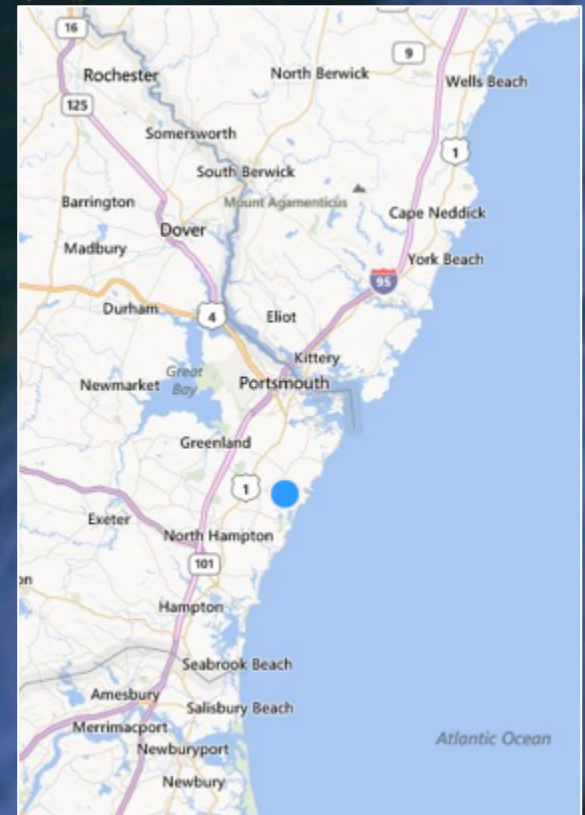
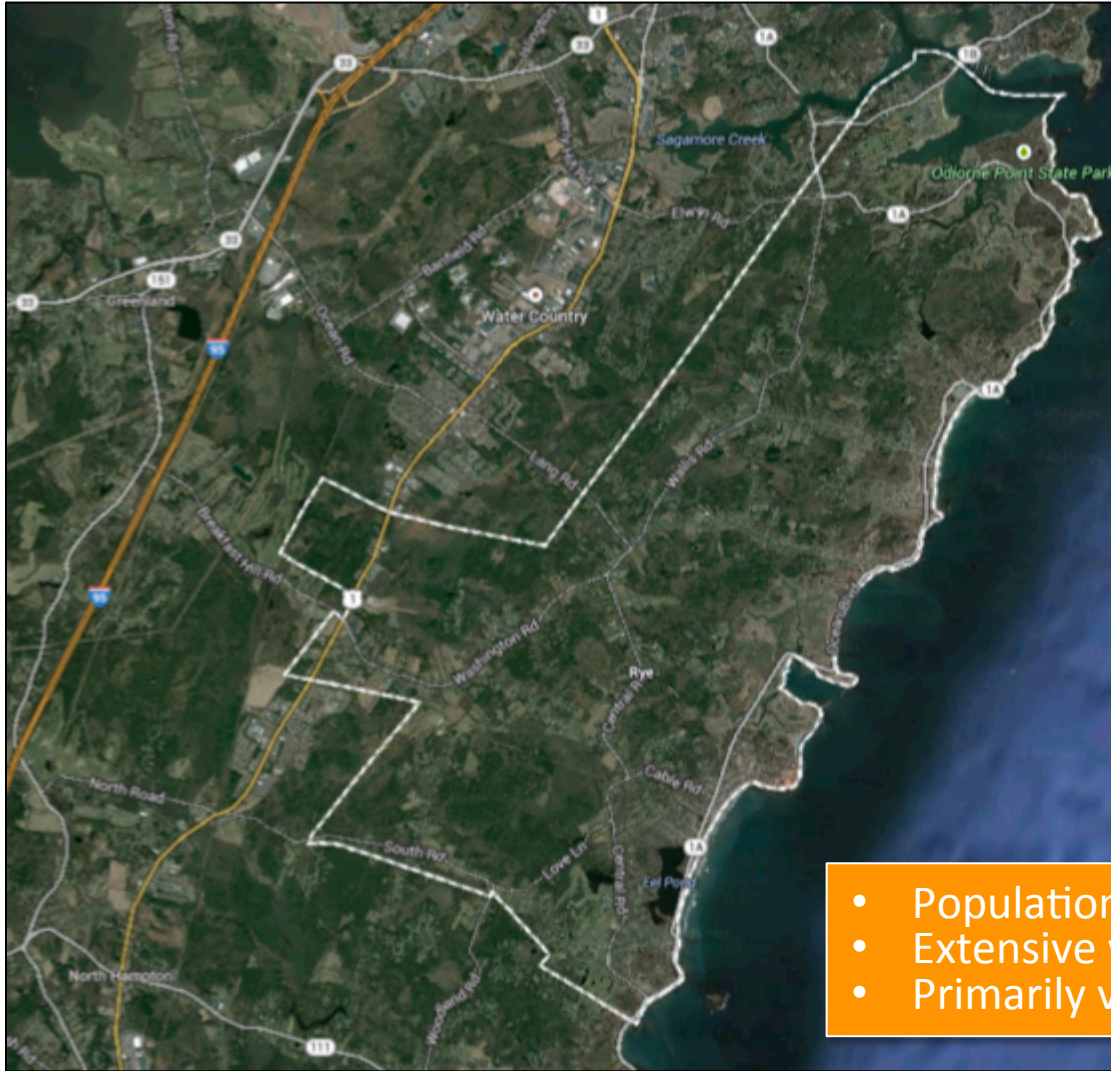
Learning how salt marshes protect Rye from storm surge, and how sea-level rise affects salt marshes



Workshop #4 – Transitioning into Next Steps

Connecting the “Preparing for Climate Change in Rye” educational and engagement series into the regional planning commission’s upcoming project.

Introducing Rye, NH

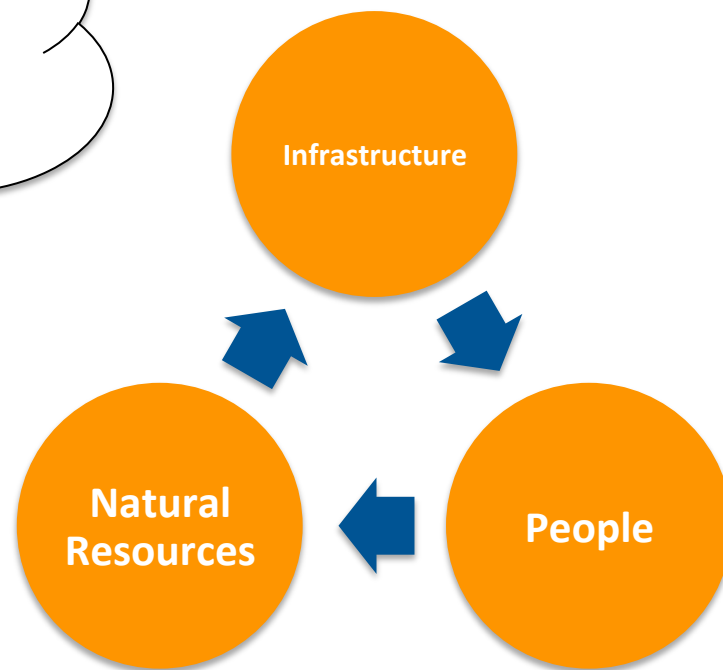


- Population: 5,200
- Extensive wetlands and beaches
- Primarily volunteer government

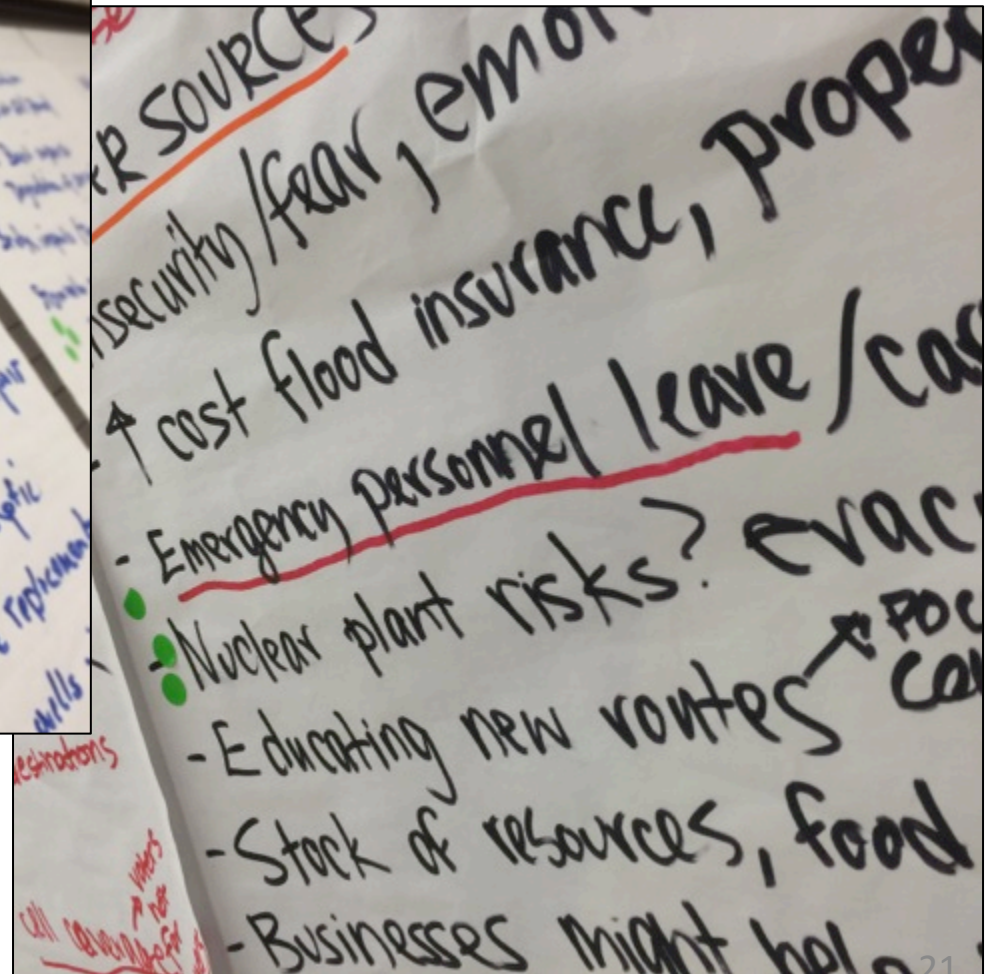
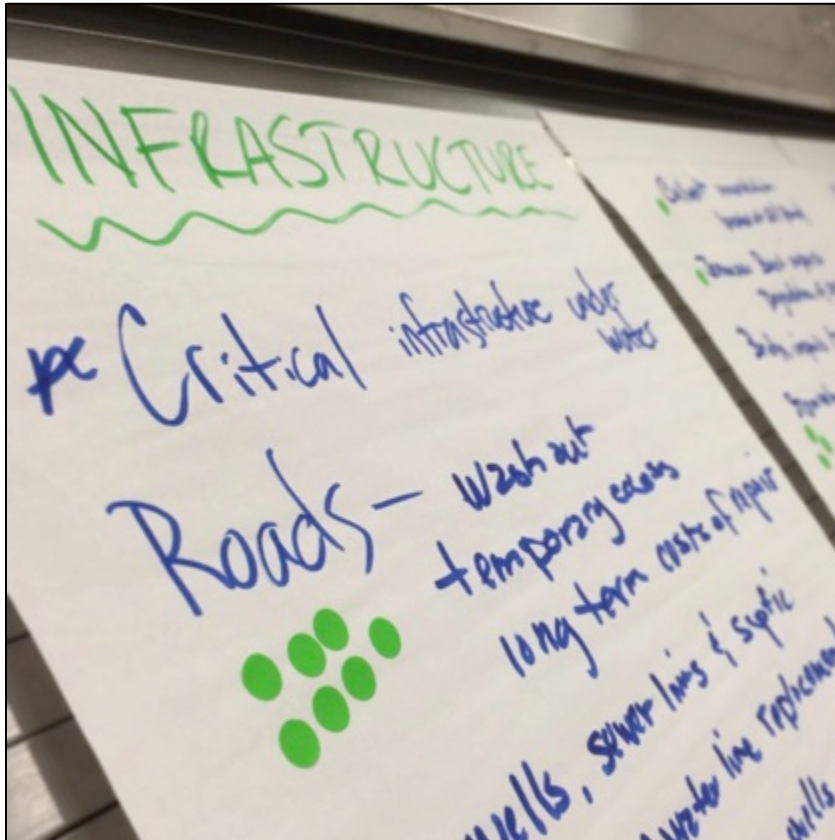
The Climate Café

Given the trends in increased frequency of storms, coastal flooding, and sea-level rise, how might these impacts affect (people, infrastructure or natural resources) in Rye?

Who can help do something about these impacts at the local, regional, state, or federal levels?



The Climate Café



The Climate Café

**Result:
A Summary of Local
Concerns**



The image cannot be displayed. Your computer may not have enough memory to open the image, or the image may have been corrupted. Restart your computer, and then open the file again. If the red x still appears, you may have to delete the image and then insert it again.

Conclusions

- Get started today! Use local knowledge and values to start; don't wait for perfect data or exhaustive analysis.
- Demystify climate change -- put it into local terms
 - Example: "Climate change means we may lose our beaches and tourism."
- Involve everybody.

Questions?



Implementation (a few examples)

Stormwater Management

Update stormwater regulation: Rework Rockingham Planning Commission/UNH Stormwater Center's model reg. into subdiv. & site plan review

Ongoing – Update completed and awaiting formal adoption

Web-based (Google Maps) inventory of location, condition, and capacity of stormwater infrastructure

Ongoing – Discussions with UNH Civil Engineering Dept; Storm/Stormwater Photo contest in Spring

Implementation (a few examples)

Emergency Preparedness

Establish “Bulk Purchase & Installation” Discount Program for residential generators

Complete – Received selectboard approval, six installations in Fall 2012

Community calendar for storm preparedness tips and information

Complete – Distributed in September 2013.

Subscribe to emergency alert system

Complete – Subscribed to NIXLE and PING