

























# Fluvial Geomorphology

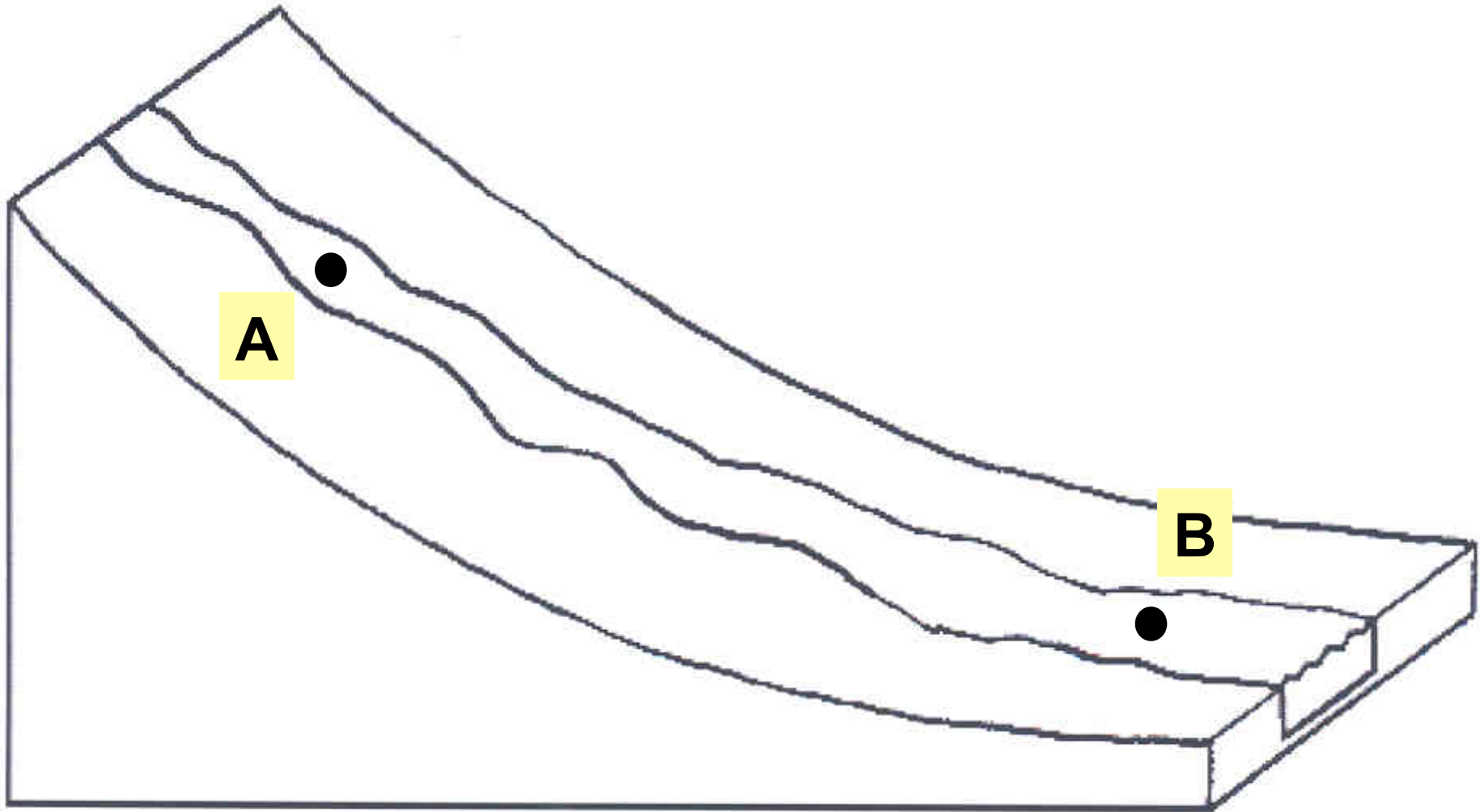
Study of stream response to natural  
watershed characteristics and  
human land use



# Equilibrium

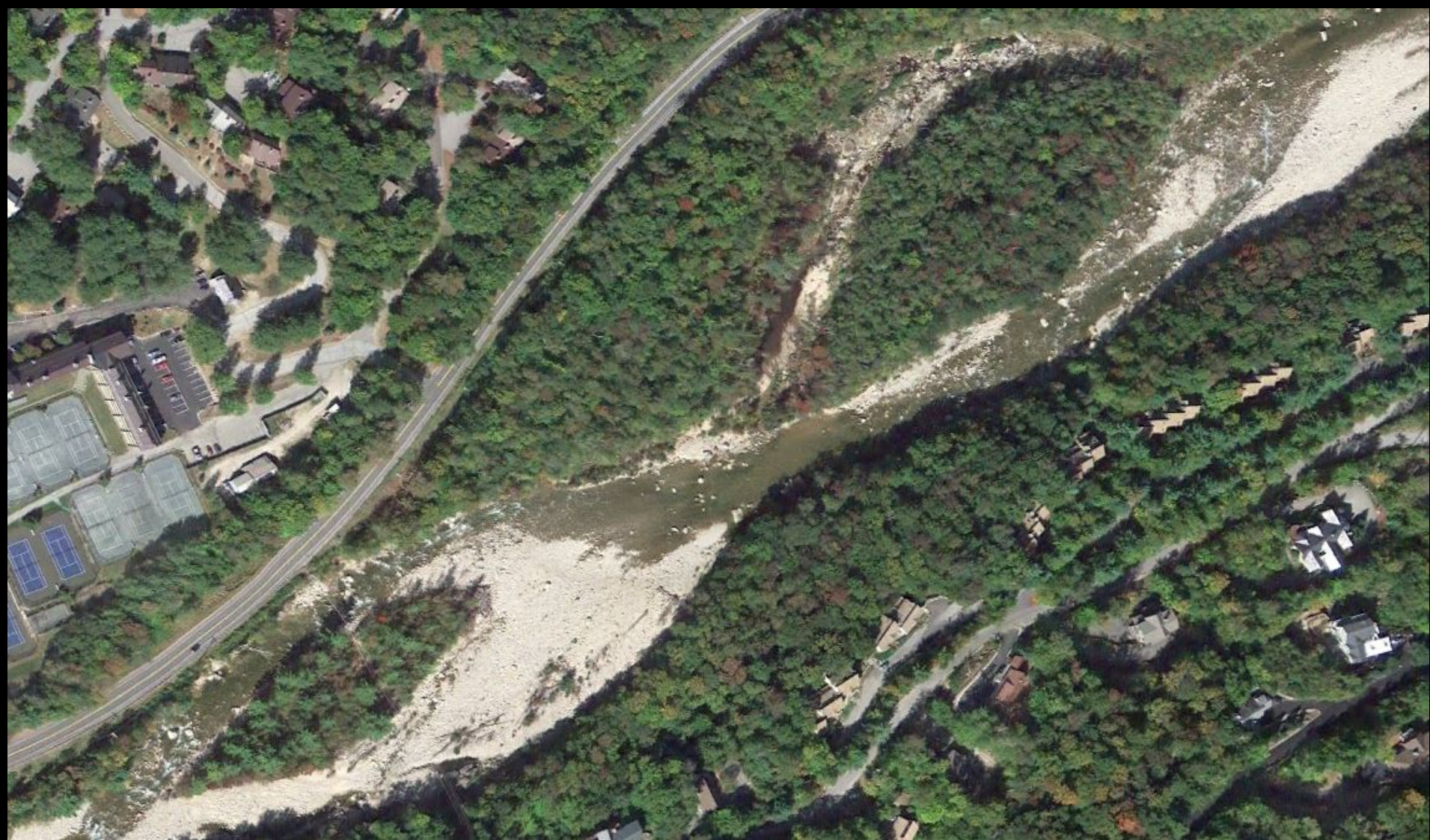
Continuity in sediment transport from  
headwaters to mouth

# Graded Stream Profile



Sediment transport at Point A equals  
transport at Point B despite change in slope

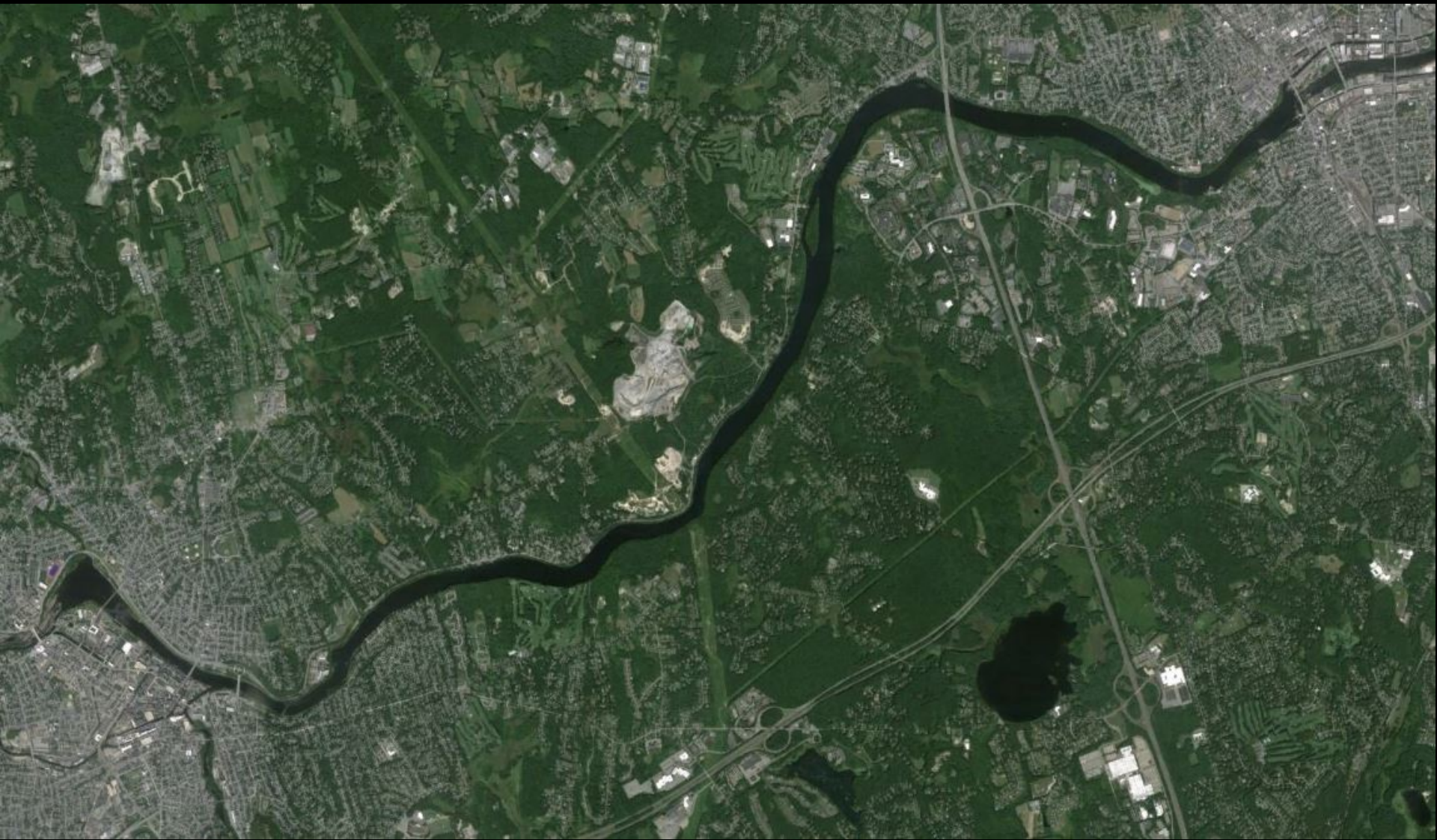










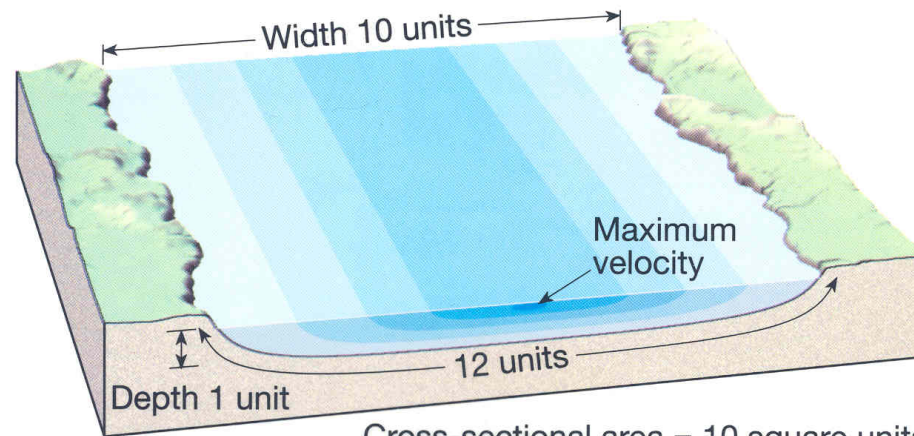






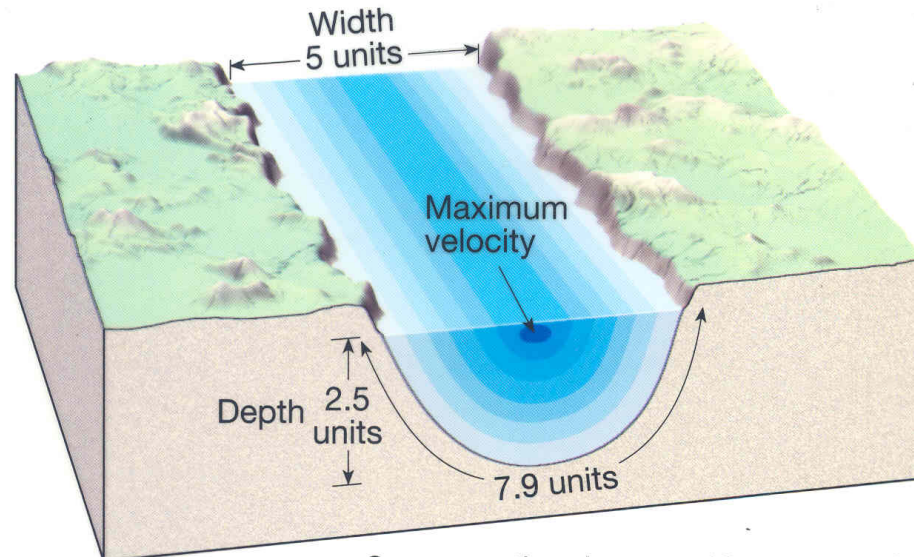


# Change in roughness offsets gradient change



A. Wide, shallow channel

Cross-sectional area = 10 square units  
Perimeter = 12 units



B. Semicircular channel

Cross-sectional area = 10 square units  
Perimeter = 7.9 units





















Courtesy of VT DEC – River Management











































































































