



City of Keene, NH

Towards a Climate Resilient Community

Local Solutions:
Northeast Climate Change
Preparedness Conference
May 19, 2014

Rhett Lamb, Planning Director
City of Keene, NH



Keene, New Hampshire “Elm City”

- Southwestern corner of the New Hampshire
- Incorporated in 1753
- Population: 22,563 (more than doubles during the day)
- Size: 34.7 Square Miles
- City Council - City Manager form of Government
- Home of Keene State College & Antioch New England University



World-Renowned Pumpkin Festival

2013 World Record for Lighted Jack-o-Lanterns 30,581

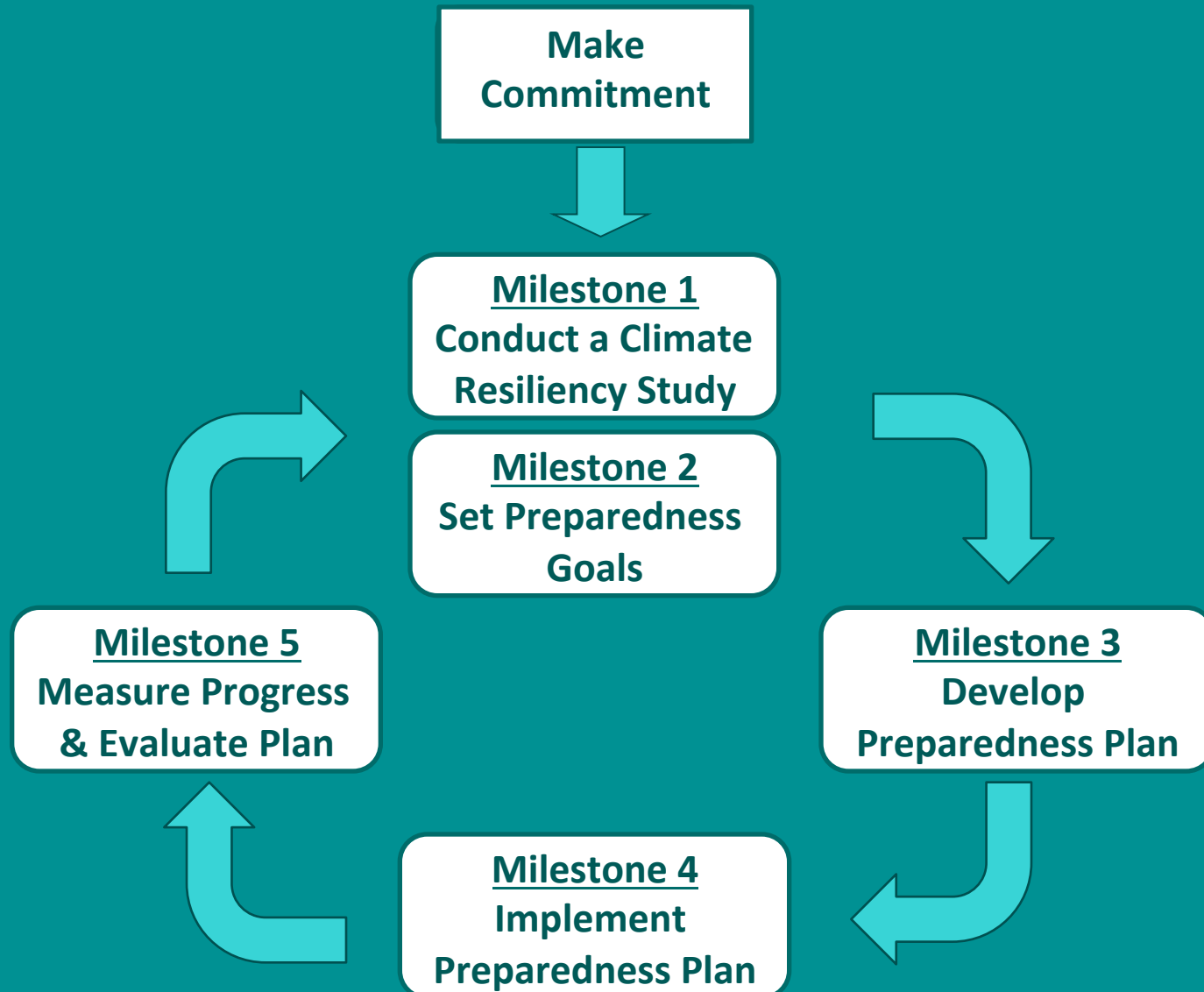
How We Got Started...

- Partnered with ICLEI in 2000 as part of CCP Mitigation program
- GHG Emissions Inventory 2000
- Established GHG reduction target Adopted Climate Change Action Plan in 2004
- Implementing projects since 2000
- Climate Resiliency (Adaptation) Plan 2007
- Comprehensive Master Plan 2010

The CRC Program

- Complements climate mitigation
- Tools to assess community vulnerability
- END GOAL = INCREASE RESILIENCY**

The Adaptation Planning Process



Climate Impacts - Keene

- Floods
- Changes in snowfall
- Changes in plant and animal species
- Hotter days
- Air Quality Impacts
- More dynamic weather pattern



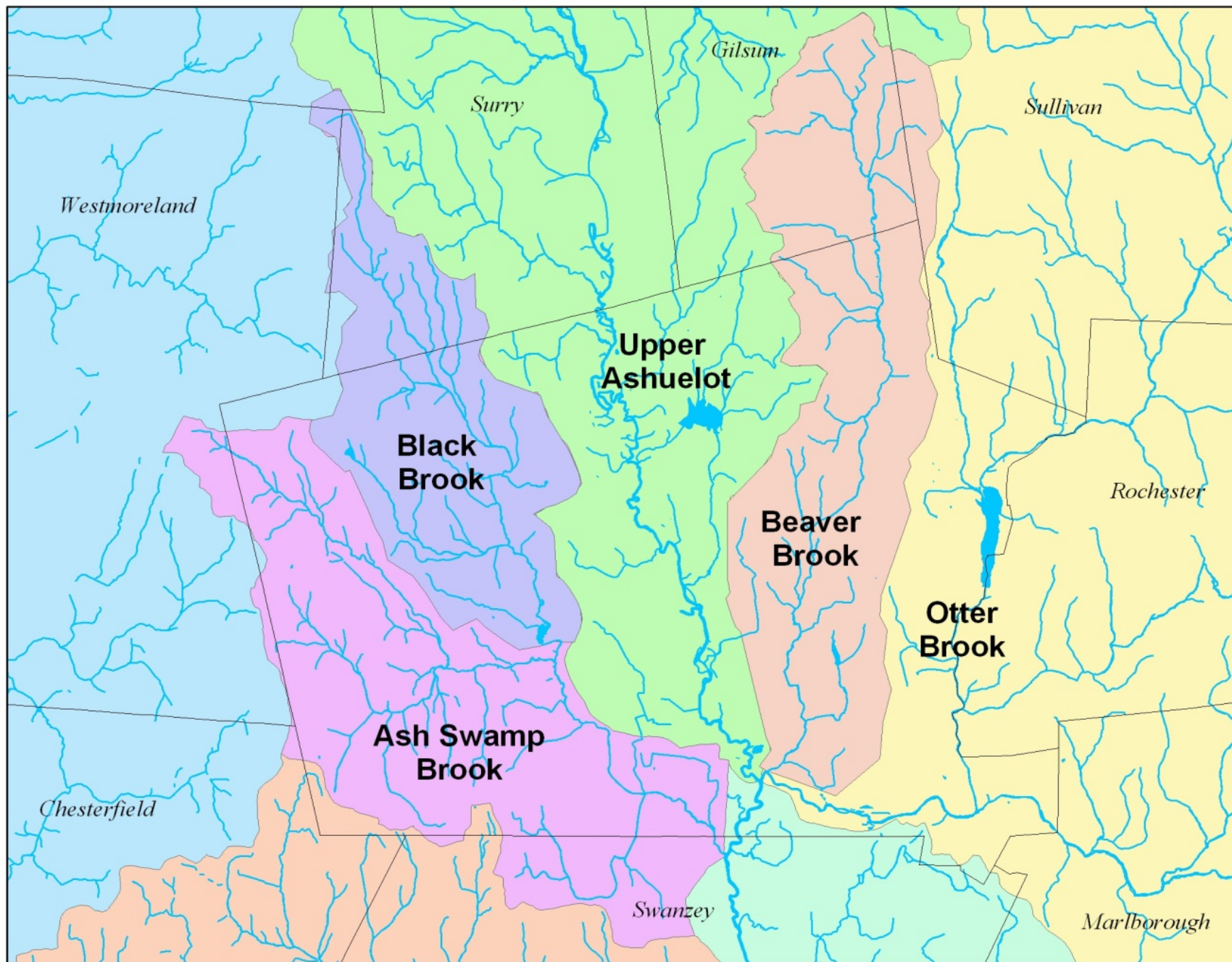
Keene 2005

Resiliency in Keene

- Develop energy efficiency and sustainable design standards
- Decrease runoff from sites
- Enhance ability of Stormwater systems to handle large storms
- Develop No Build zones
- Create migratory pathways for animals
- Promote renewable energy resources
- Increase local food production
- Improve reliability of emergency communications
- Set the stage for a community conversation about sustainability

Observations

- Floodplain Management helps
- Fixing Big Problems takes a Long Time
- FEMA Programs Need to be Recalibrated
- Find a Way to Help affected Residents & Businesses
- Make sure New Development Doesn't Make Things Worse



CITY OF KEENE



Legend

- Tax Parcel's 2025
- Conservation Lands 2025
- FWS Wetlands
- Water Bodies
- Water Courses
- 25-foot Contours
- Elevation (feet)**
 - 1075 - 1375
 - 975 - 1075
 - 900 - 975
 - 825 - 900
 - 725 - 825
 - 625 - 725
 - 525 - 625
 - 475 - 525

1 inch equals 4,470 feet

The City of Keene makes no
warranty or representation as
to the accuracy, timeliness, or
completeness of any of the data.
The City of Keene shall
have no liability for the data
or for the timing or implementation
made or action taken or not taken
in reliance upon any of the data.



“CAFFEINATED CLIMATE”

2005 October* 11.2 inches in 24 hrs

2012 May* 4.8 - 6.9 inches in 5 hrs

2013 September 4.6 inches in 5 hrs

*** Federal disaster declaration**

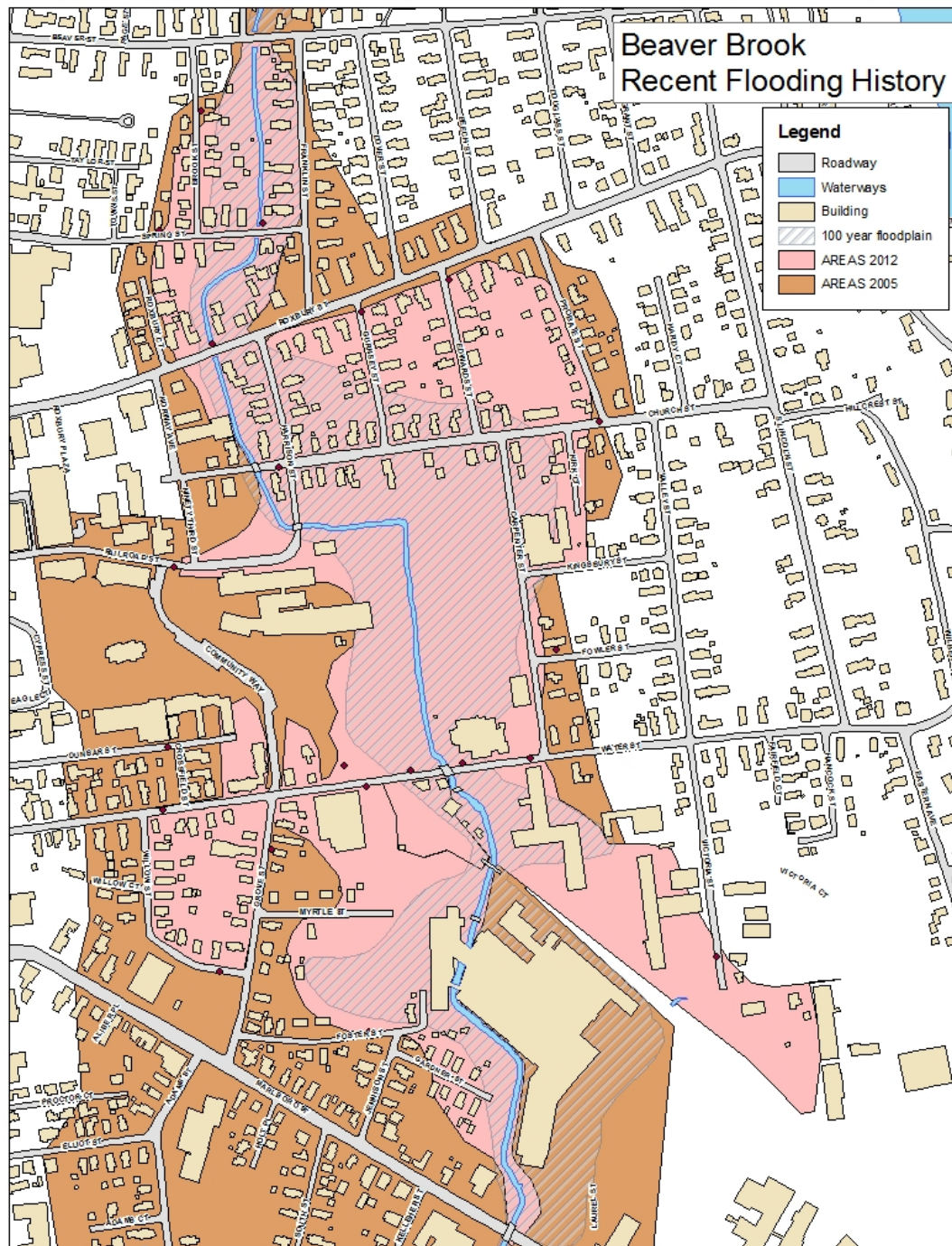








Beaver Brook Recent Flooding History



forwarded this message on 5/16/2014 12:13 PM.

There are problems with how this message is displayed, click here to view it in a web browser.

Click here to download pictures. To help protect your privacy, Outlook prevented automatic download of some pictures in this message.

City of Keene <citreq-dpw=ci.keene.nh.us@mail17.us4.mcsv.net> on behalf of City of Keene <citreq-dpw@ci.keene.nh.us>

Rhett Lamb

Weekend Rain Forecasted for Keene



MAY 16, 2014

Weekend Rain Forecasted

Heavy rains are predicted for Keene and the Monadnock Region tonight and through this weekend. The Public Works Department, Highway Division, will be inspecting the City drainage system today, as well as brooks and waterways to clear any debris and ensure proper drainage.

The Public Works Department would like to remind residents that they can help ensure proper drainage in their neighborhoods by clearing any leaves or debris from catch basins. We also request that drivers do not attempt to drive on a roadway if it appears to be flooded. This can send water onto properties and can flood basements.

Please contact the Public Works Department at 603-352-6550 with questions or concerns.



[view email in browser](#) | [Unsubscribe](#) rlamb@ci.keene.nh.us from this list. | [visit our website](#) | [forward to a friend](#)

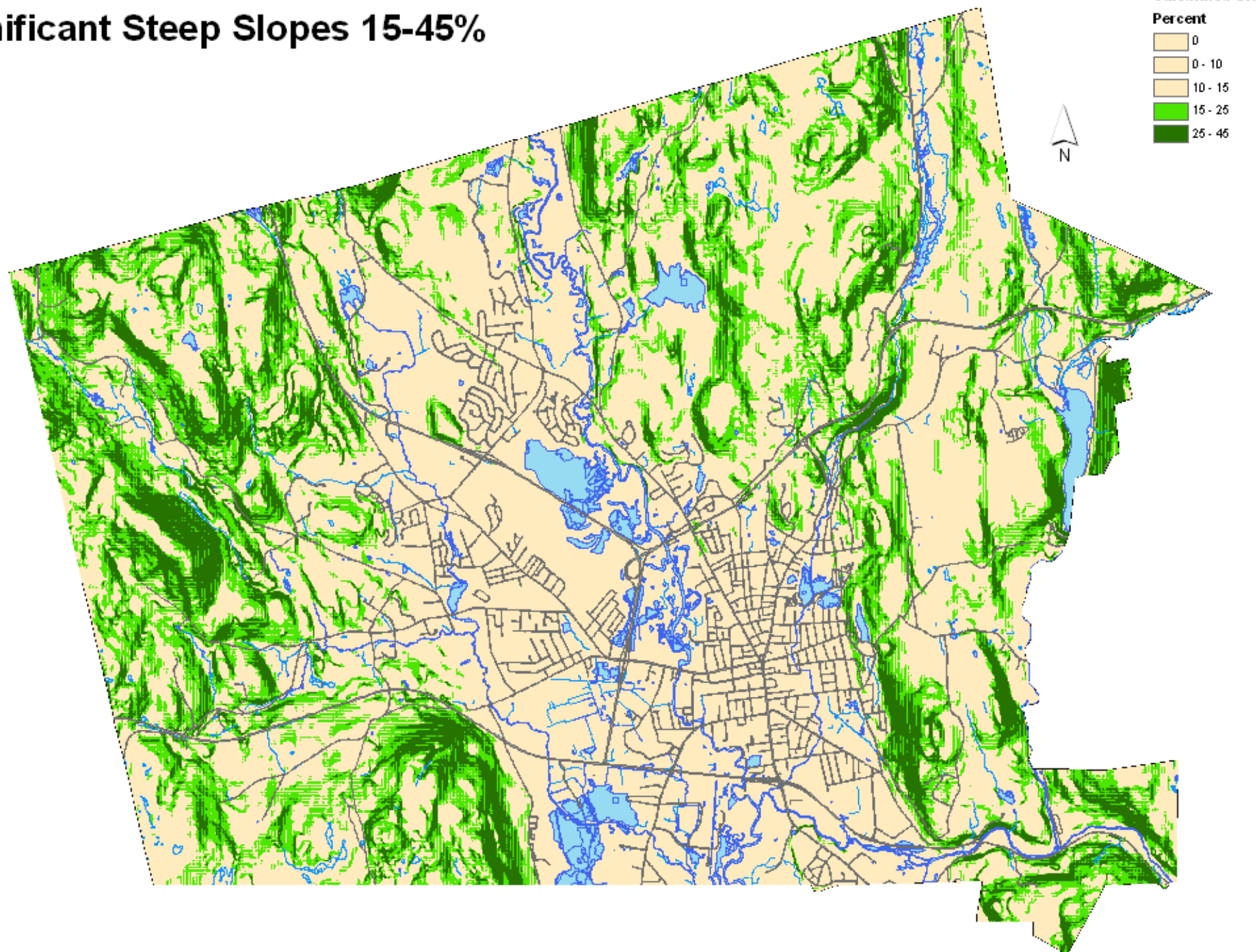








Hill Sides : Significant Steep Slopes 15-45%





Portland waterfront "King Tide" October 28, 2011



Rhett Lamb

Planning Director

City of Keene Planning Department

City Hall 4th Floor

3 Washington Street

Keene, New Hampshire 03431

603-352-5474

rlamb@ci.keene.nh.us

www.ci.keene.nh.us/planning/climateprotection.htm