



Buildings in Harm's Way

May 19, 2014

Local Solutions
Conference
Manchester, NH

Climate Change?



Rawlings Miller

ICF International

Sarah Slaughter

Built Environment Coalition

Julia Knisel

Massachusetts Coastal Zone Management

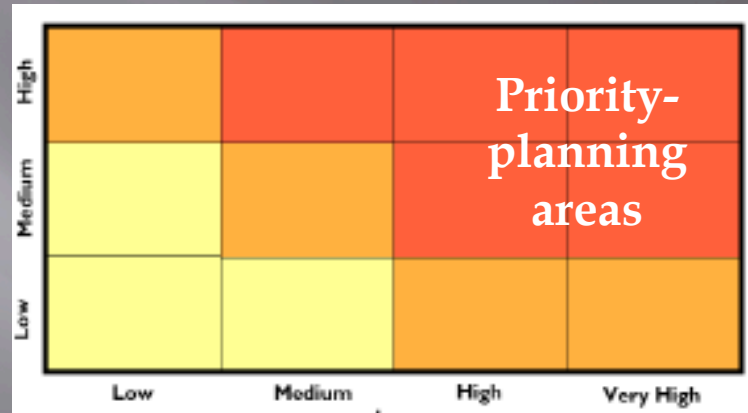
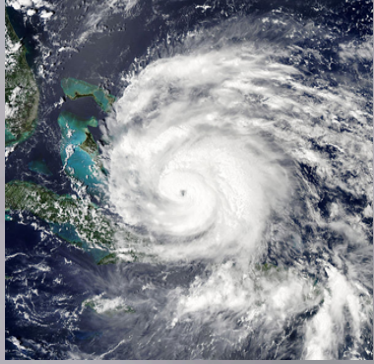
John Bolduc

City of Cambridge

Key Themes

- It is important to rigorously assess climate change vulnerabilities before jumping to action
- The built environment faces new and more intense hazards and a new, shifting “normal” climate
- Climate change risks are dynamic, many, and inter-connected; it’s important to be flexible
- There is existing resilience in our communities and ways to increase resilience

Climate Preparedness in Cambridge



Step 1

Climate Projections
2030 & 2070

Scenario Development

Technical analyses

- Coastal storm surges
- Inland flooding
- Public health
 - heat & vectors
- Social vulnerability
- Economic
- Urban forest

Step 2

Vulnerability & Risk
Assessment

- Physical infrastructure
 - Buildings
 - Energy
 - Transportation
 - Water
 - Wastewater
 - Telecommunications
- Critical services
- Community facilities

Step 3

Adaptation Planning
and Design