

Maintaining Vital Links: Transitioning our Aging Transportation Infrastructure (T3D)

Local Solutions: Northeast Climate Preparedness Conference

May 20, 2014

Moderator:

Becky Lupes

Sustainable Transport and Climate Change Team

Office of Planning, Environment, and Realty

Federal Highway Administration

Presenters

Peter Cusolito, CEM, CFM, Senior Security and Emergency Management Planner, Vanasse Hangen Brustlin, Inc.

Judy Gates, Director, Environmental Office, Maine Department of Transportation

Steven Miller, Supervisor of Environmental Management Systems and Sustainability, Massachusetts Department of Transportation

FHWA Climate Change & Extreme Weather Vulnerability Assessment Framework

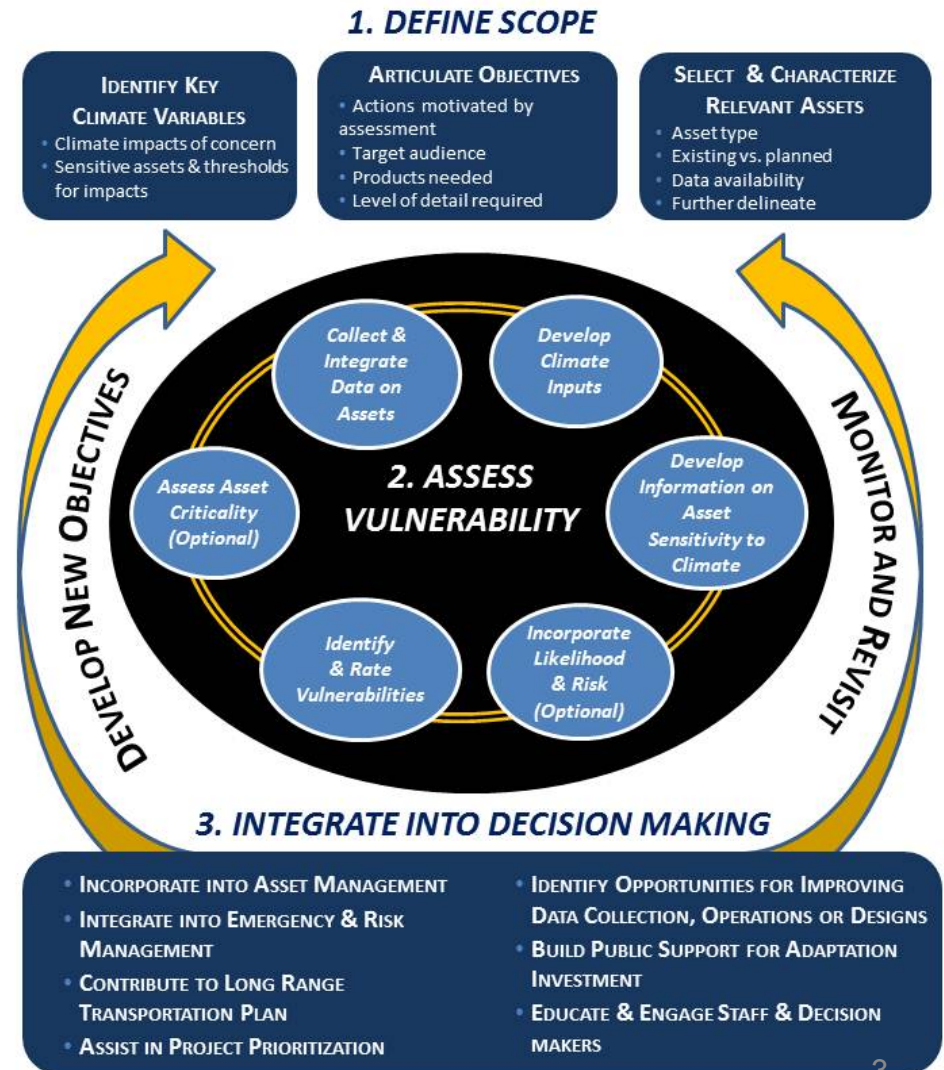
1. Define Project Scope

- Objectives
- Relevant Assets
- Climate Variables

2. Assess Vulnerability

- Climate Inputs
- Asset data, criticality, sensitivity
- Vulnerabilities, risk

3. Integrate Vulnerability Into Decision Making



FHWA Climate Resilience Pilot Program

Pilots will use and build on FHWA's *Climate Change & Extreme Weather Vulnerability Assessment Framework*

19 Pilots

Tennessee

Maine

Michigan

Arizona

Alaska

Connecticut

Massachusetts

CAMPO

(Austin)

Broward MPO

NCTCOG

New York

Iowa

Maryland

Minnesota

California

Oregon

Washington

Hillsborough

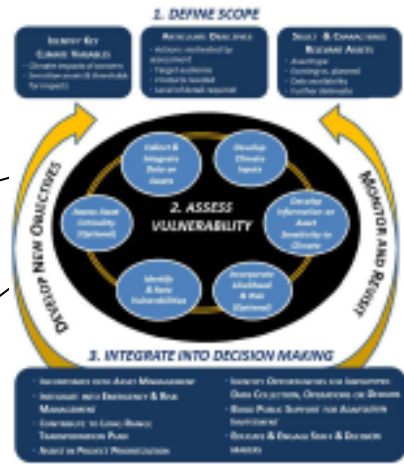
MPO

MTC (San

Francisco)

- Vulnerability and/or adaptation
- Broad geographic coverage, range of impacts
- Will further the state of practice in the emerging area of resilience to climate change and extreme weather
- Complete late 2014/early 2015

FHWA/DOT Virtual Framework and Tools



Module 1
Articulate Objectives

Module 6
Monitor and Revisit

Module 2
Identify Climate Stressors

Module 5
Integrate in Decision Making

Module 3
Select Assets

Module 4
Assess Vulnerabilities

Sensitivity Matrix

Criticality Guidance

CMIP Climate Data Processing Tool

Vulnerability Assessment Scoring Tool

Engineering Case Studies