

# Climate Change: Vulnerability Assessment and Preparedness Data and the Community

*Veda Truesdale, Bloustein School of Planning and Public Policy, Rutgers University*



Photo courtesy of the Newark Ironbound Community Corporation

# Knowing Your Challenge

- How will climate change affect your region?  
Your community?
- Which impacts do you need to prepare for?
- Which resources are at risk?
- *How receptive is your community to this information?*



Preparedness and Resilience Plan

# Some Factors to Consider

## Climate Impacts:

- Current Flood Risk
- Storm surge
- Sea Level Rise
- Riverine Flooding
- Drought
- Extreme Heat
- Urban Heat Island
- Diminished Air Quality
- Salt Water Intrusion
- Vector-borne disease

## Factors to Consider:

- Tree canopy coverage
- Impervious Coverage
- Disease incidence
- Adverse health incidence (heat-related illness, mold

## problems)

- Infrastructure /Critical Facilities
  - Evacuation Routes,
  - Emergency Response
  - Medical Facilities
  - Water and Wastewater Treatment
  - Electrical sub-stations
  - Grocery Stores
  - Hardware Stores
  - Community Centers
  - Cooling Centers
  - Schools
  - Major Employers
  - Transit Facilities)

## • Land Use

## • Residential Areas

## • Known Contaminated Sites

## • Vulnerable Populations

- Elderly
- Young
- Living in Poverty
- Socially isolated
- Linguistically isolated

## • Zoning

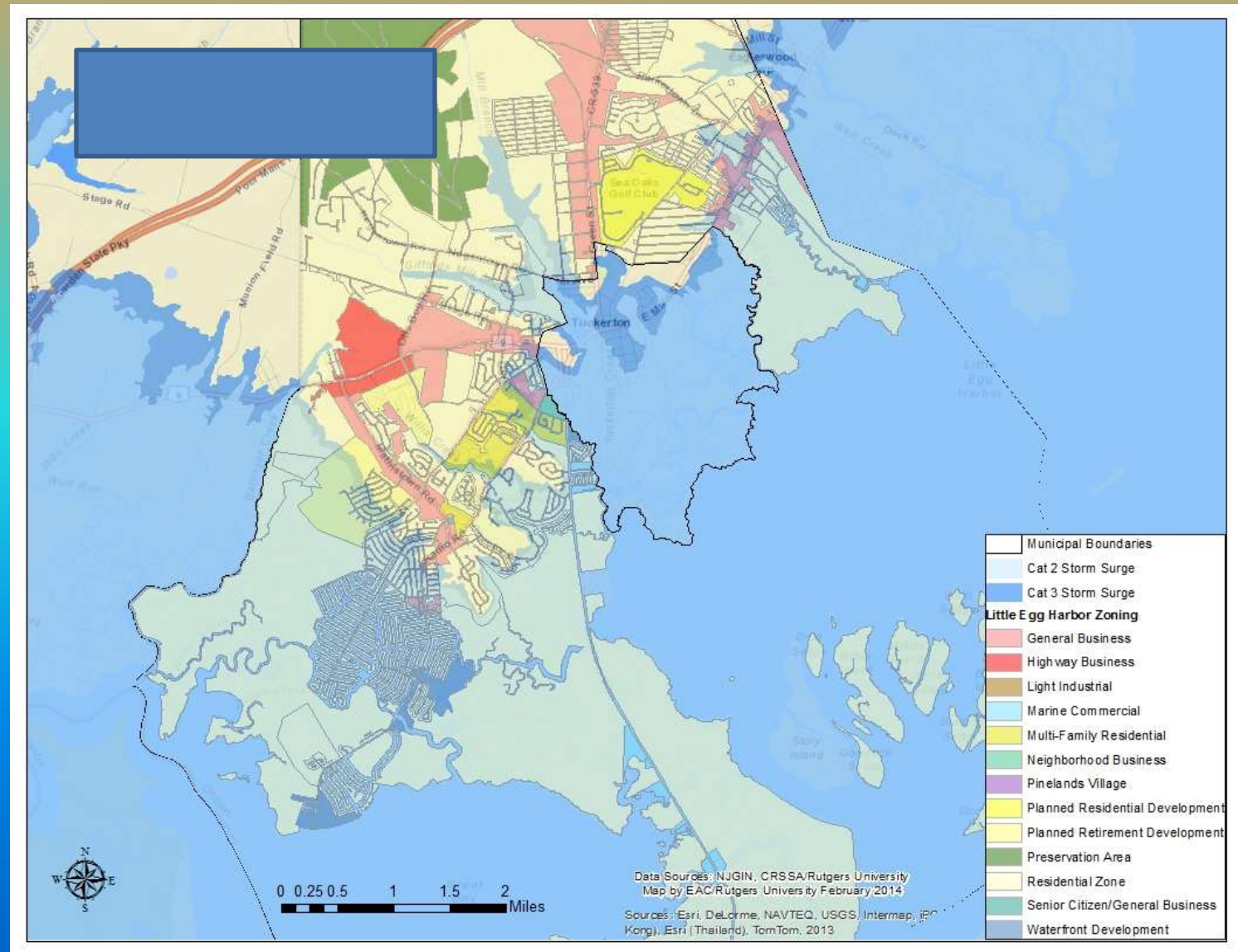
## • National Flood Insurance Payouts

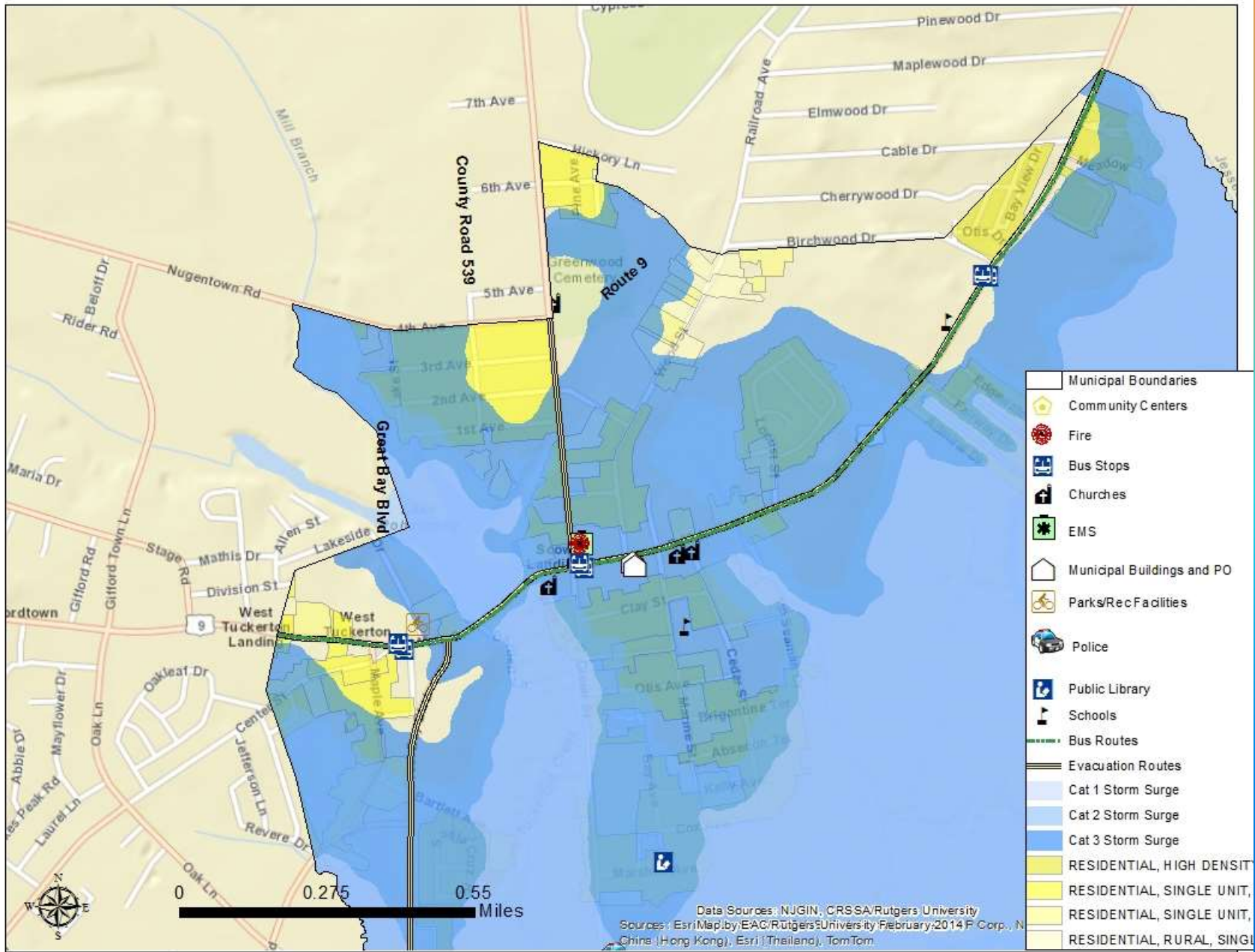
## • FEMA Individual Assistance

## • FEMA Public Assistance



# But don't try to put it all on one map





# Other Issues

- Missing data, withheld data, etc.
- “Ground-truthing” the data.
- Participatory data development, including PGIS.
- Helpful partnerships.
- Certification Programs.